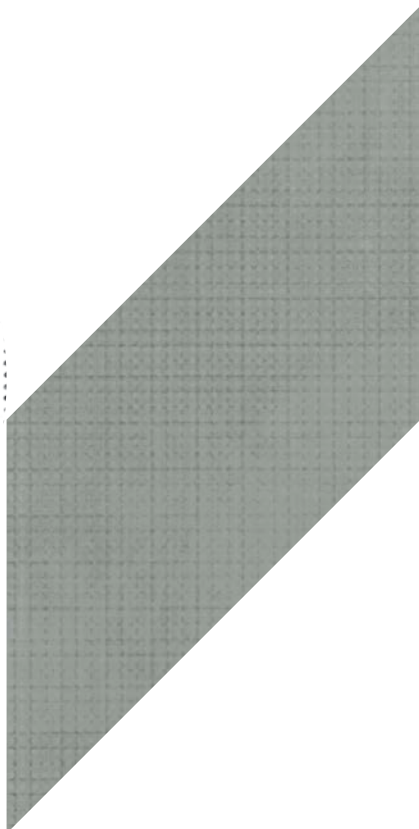


• p a p i e r •



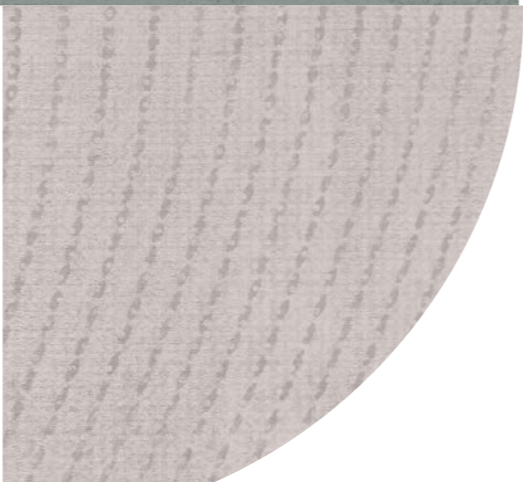
• p a p i e r •

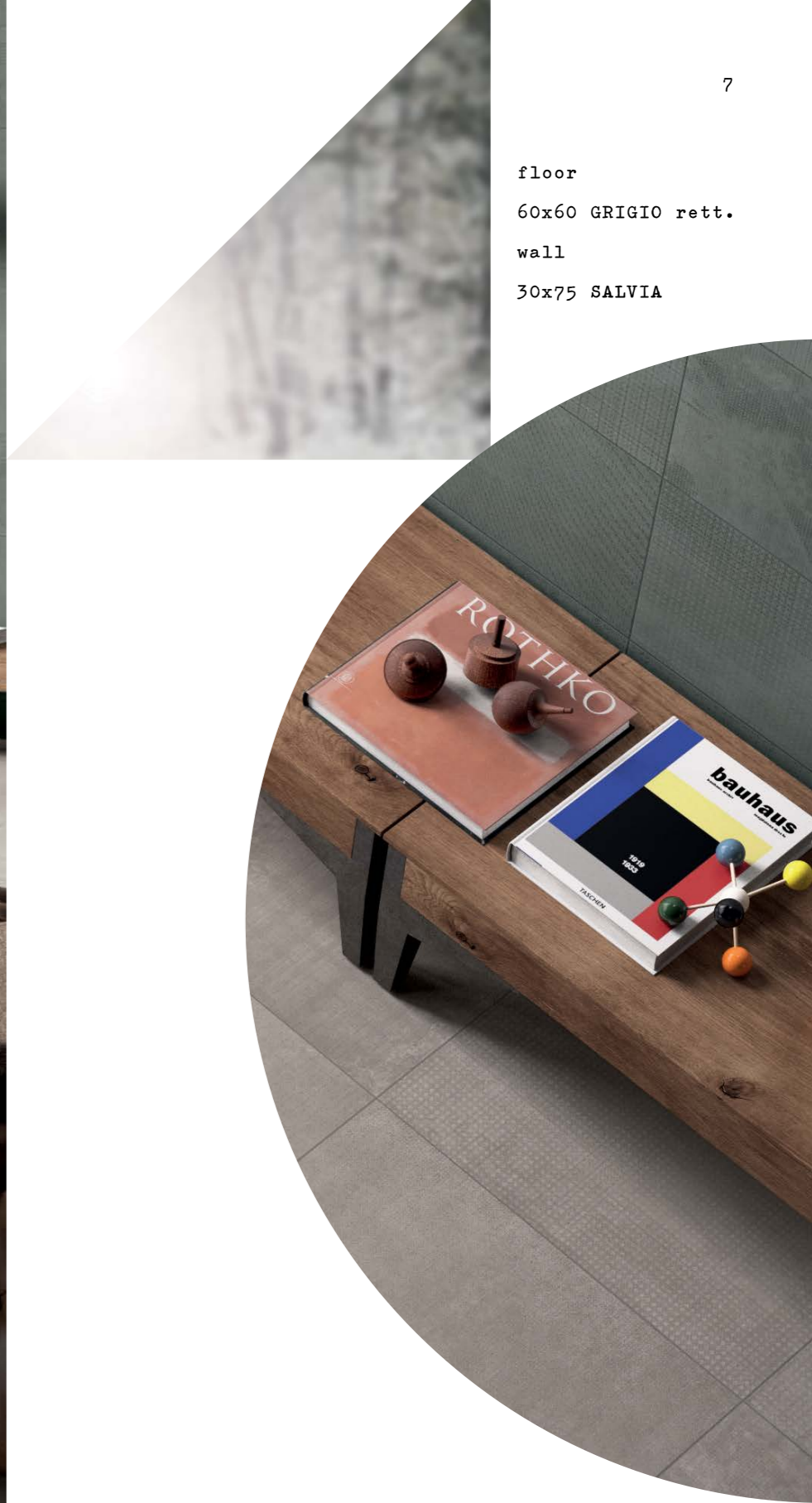
Papier presenta un percorso innovativo nella progettazione ceramica, che si basa sulla ricerca di superfici inedite ad alto contenuto decorativo. Prendendo spunto dal mondo della moda e dell'interior design mescola sapientemente tra loro non solo i colori, ma grafiche e texture, con effetti di imprevedibile ricercatezza. Papier racchiude un universo di segni grafici geometrici, fantasie astratte, dal sapore vagamente retro', all'interno di una proposta di pavimenti e rivestimenti da sfogliare come una mazzetta di tessuti d'arredo. Una risposta alle esigenze dell'architettura contemporanea dove, su una base neutra declinata in 6 tonalita' e simile alla superficie del cemento, si alternano motivi grafici tono su tono per pavimenti e rivestimenti suggestivi da comporre come tappeti o arazzi di ceramica.

Papier has an innovative path in designing ceramics that is based on the search for novel surfaces with high decorative connotation. Taking a cue from the world of fashion and interior design, it skilfully blends between them not only colours, but graphics and textures, with effects of unpredictable sophistication. Papier encapsulates a universe of geometric graphic signs, abstract fantasies and vaguely retro taste, within a range of floors and wall coverings to be browsed through similar to a soft furnishings swatch book. A response to the requirements of contemporary architecture where, on a neutral base divided into 6 tones and similar to the surface of concrete, graphic motifs alternate tone on tone resulting in attractive floors and wall coverings to be created as ceramic carpets or tapestries.



floor
60x60 GRIGIO rett.
wall
30x75 SALVIA





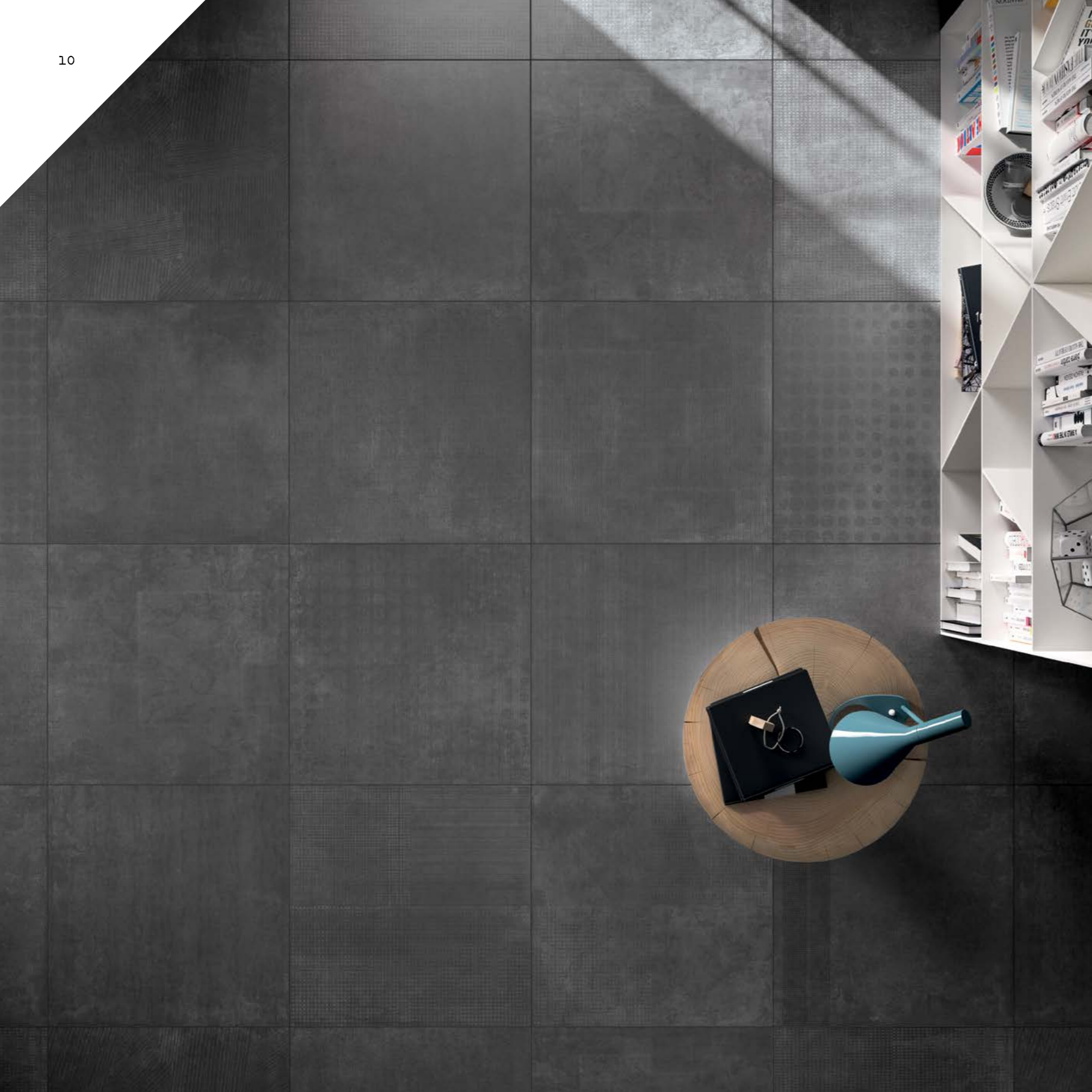
floor
 60x60 GRIGIO rett.
 wall
 30x75 SALVIA

floor
60x60 CORDA rett.



floor
60x60 NOCCIOLA rett.





floor
60x60 ANTRACITE rett.



wall
 30x75 CORDA
 90x225 PROGETTO FLEUR
 2,5x30 FASCIA LEGNO
 floor
 40x170 SOLERAS NATURALE
 rett.





wall
 30x75 CORDA
 30x75 NOCCIOLA
 90x225 PROGETTO FLEUR
 2,5x30 FASCIA LEGNO
 floor
 40x170 SOLERAS NATURALE
 rett.



wall

30x75 COTONE

30x75 SALVIA

30x75 DEC. SAMARCANDA COTONE

30x75 DEC. SAMARCANDA SALVIA

LIST. SAMARCANDA TOPAZIO

floor

DOCKS 60x60

WHITE PATINATO RETT.





wall

30x75 COTONE

30x75 SALVIA

30x75 DEC. SAMARCANDA COTONE

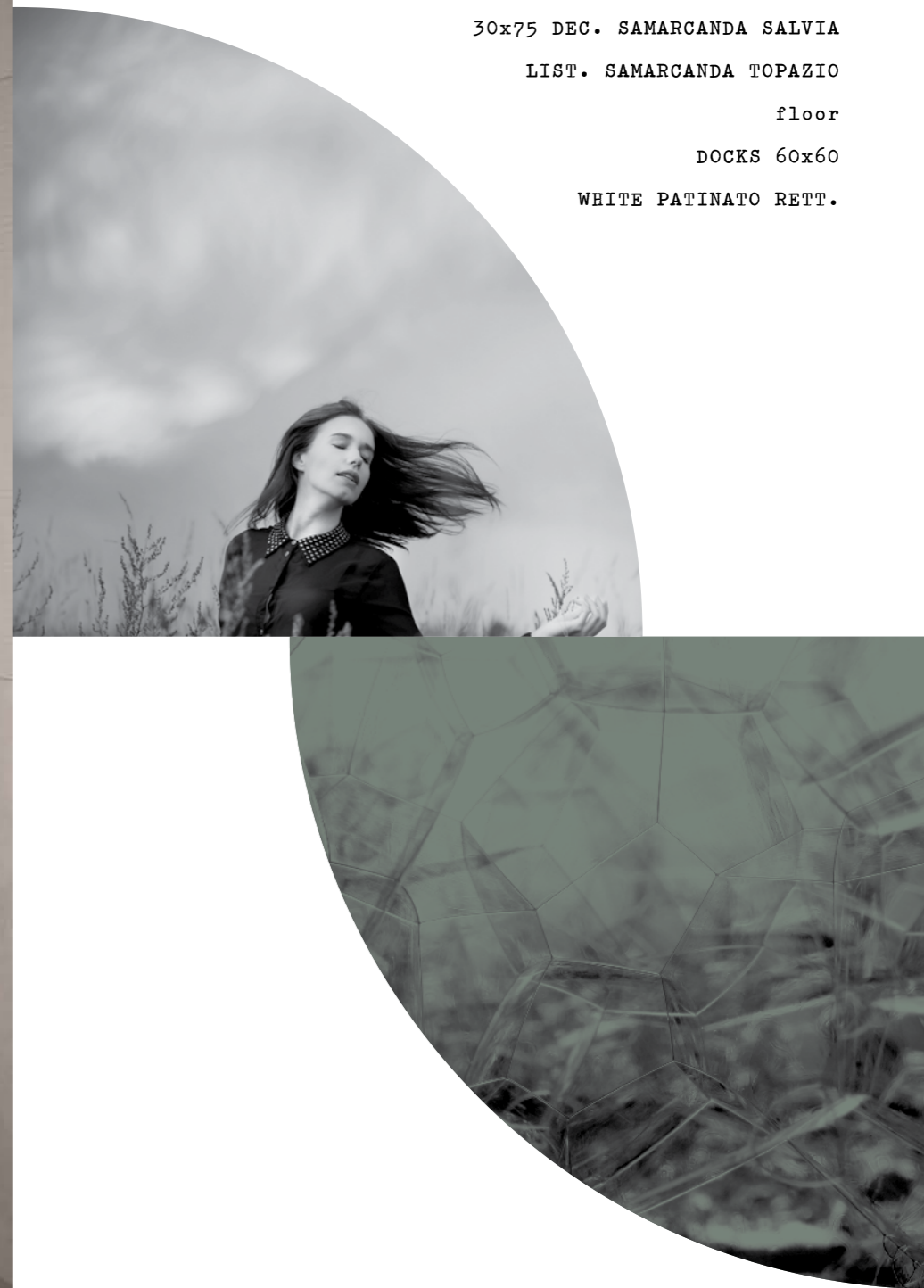
30x75 DEC. SAMARCANDA SALVIA

LIST. SAMARCANDA TOPAZIO

floor

DOCKS 60x60

WHITE PATINATO RETT.





wall

30x75 GRIGIO

120x75 COMP. LETTERING GRIGIA

floor

60x60 ANTRACITE rett.





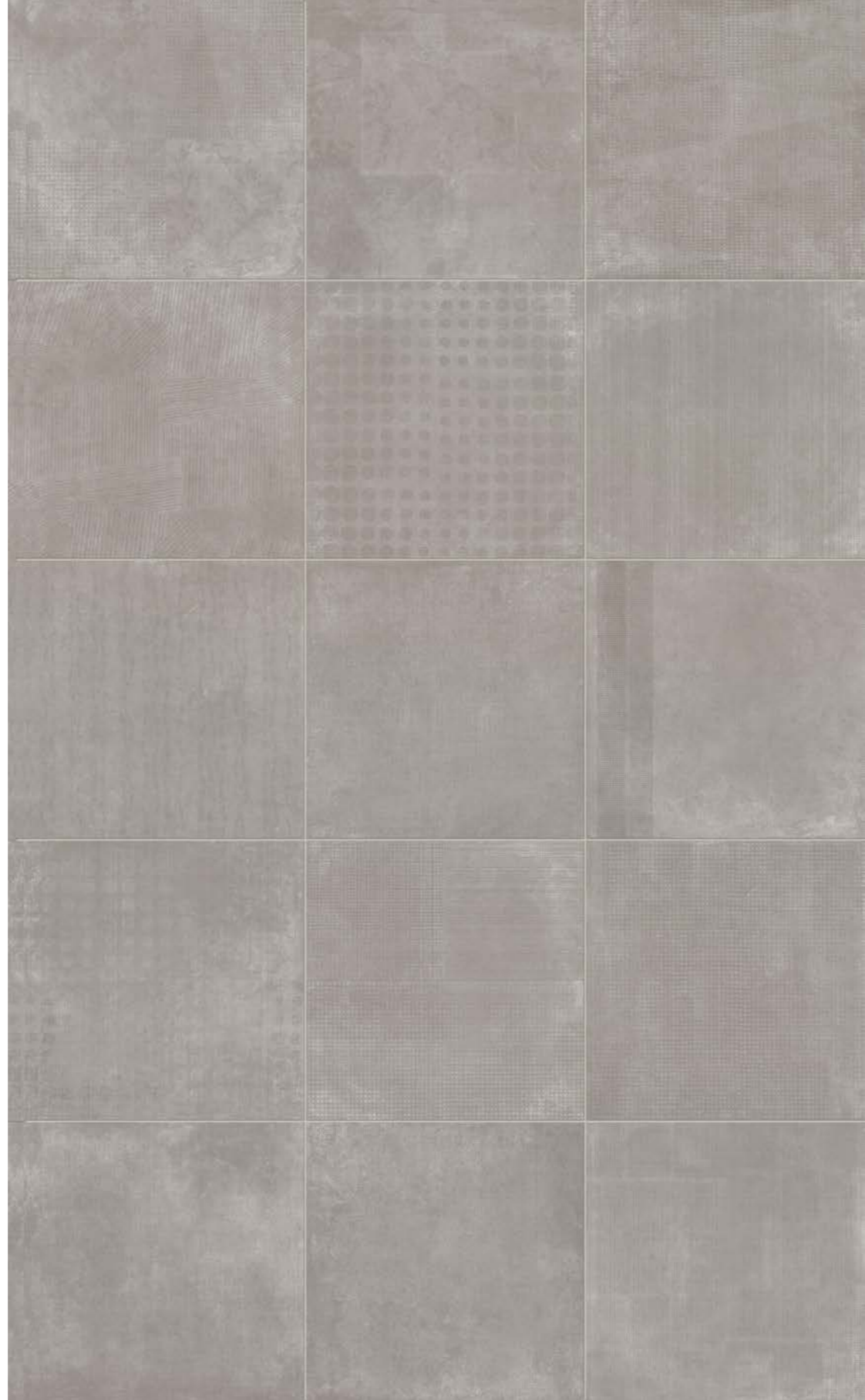
wall
 30x75 GRIGIO
 30x75 ANTRACITE
 120x75 COMP. LETTERING GRIGIA
 floor
 60x60 ANTRACITE rett.



• p a p i e r •

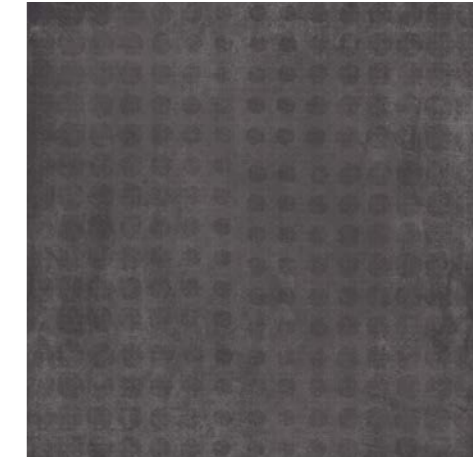
GRES PORCELLANATO A MASSA COLORATA
COLORED BODY PORCELAIN TILES

15 DIFFERENT PATTERN
FOR EACH COLOR



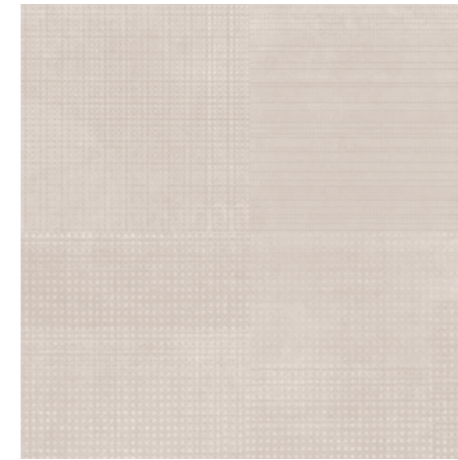
PAPIER GRIGIO
60x60
PPRO1250 | rettificato

3



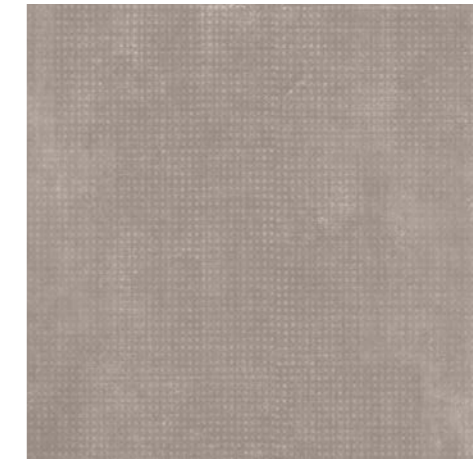
PAPIER ANTRACITE
60x60
PPRO1300 | rettificato

3



PAPIER CORDA
60x60
PPRO1100 | rettificato

3



PAPIER NOCCIOLA
60x60
PPRO1150 | rettificato

3



BATTISCOPA
6,5x60

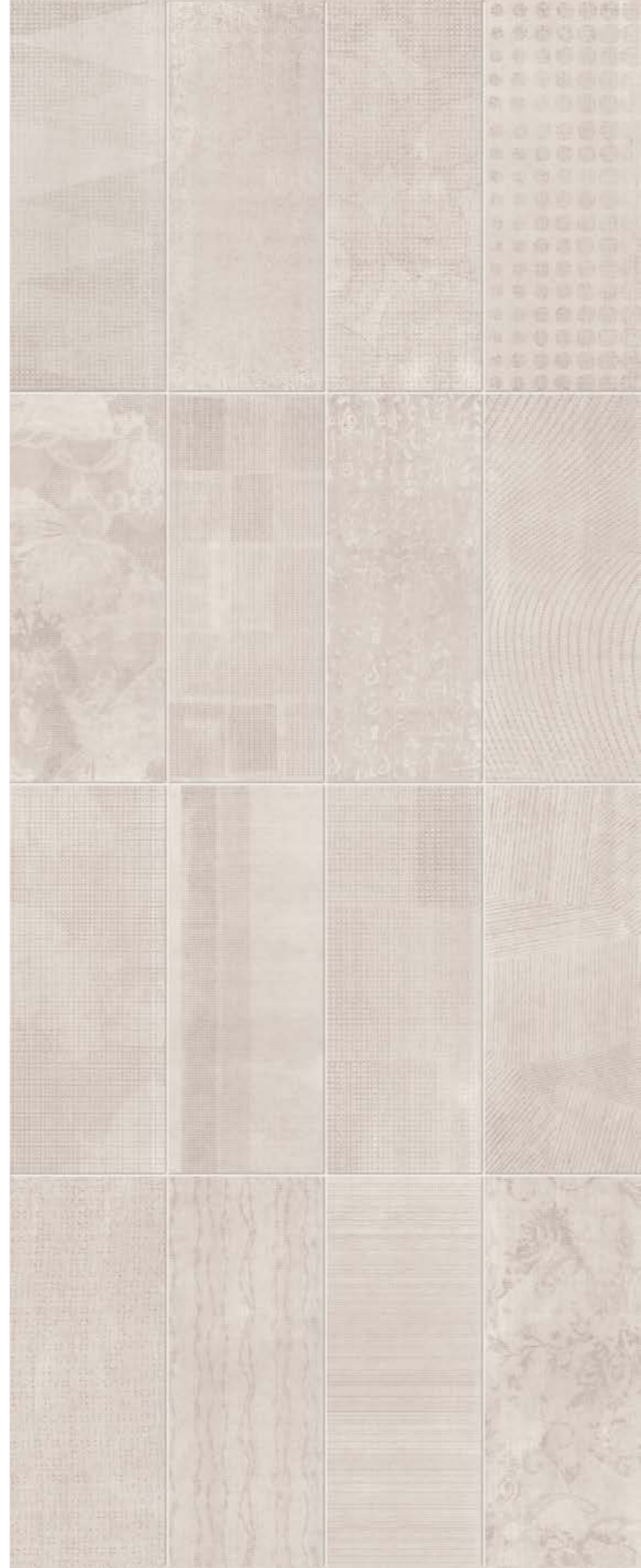
10

- PAPIER GRIGIO PPRO1251
- PAPIER ANTRACITE PPRO1301
- PAPIER CORDA PPRO1101
- PAPIER NOCCIOLA PPRO1151

• p a p i e r •

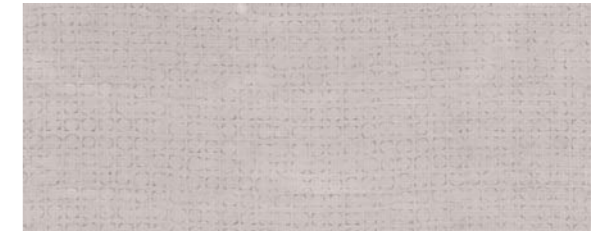
BICOTTURA IN PASTA BIANCA
DOUBLE FIRED WHITE BODY TILES

16 DIFFERENT PATTERN
FOR EACH COLOR



PAPIER COTONE
30x75
PPN53050

⊞ 5



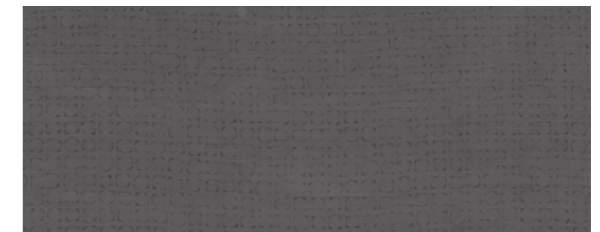
PAPIER GRIGIO
30x75
PPN53250

⊞ 5



PAPIER CORDA
30x75
PPN53100

⊞ 5



PAPIER ANTRACITE
30x75
PPN53300

⊞ 5



PAPIER NOCCIOLA
30x75
PPN53150

⊞ 5



PAPIER SALVIA
30x75
PPN53200

⊞ 5



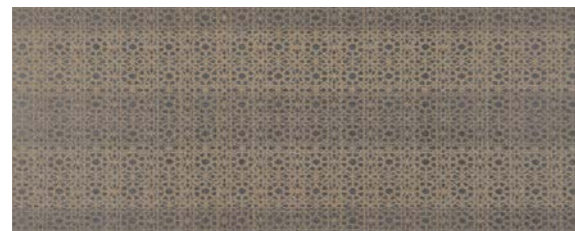
* DEC. SAMARCANDA COTONE
30x75
PPN53057

☞ 2



* LIST. SAMARCANDA BRONZO
3x75
PPN53056

☞ 3



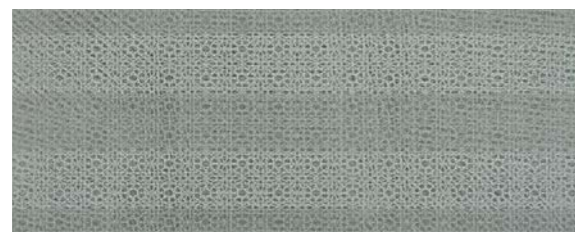
* DEC. SAMARCANDA ANTRACITE
30x75
PPN53307

☞ 2



* LIST. SAMARCANDA BRONZO
3x75
PPN53056

☞ 3



* DEC. SAMARCANDA SALVIA
30x75
PPN53207

☞ 2



* LIST. SAMARCANDA TOPAZIO
3x75
PPN53206

☞ 3

* Metalli preziosi: si consiglia di pulire la superficie senza utilizzare prodotti contenenti sostanze abrasive.
Precious metals: do not use products containing abrasive substances to clean the surface.



PROGETTO FLEUR CORDA (Comp. 9 pz.)
90x225
PPN53101

☞ 1 cp = 3 box



COMP. LETTERING CORDA (4 pz.)
75x120
PPN53105

☞ 1 cp



COMP. LETTERING GRIGIO (4 pz.)
75x120

☞ 1 cp

Grazie alla variabilità grafica del fondo, ogni progetto Fleur e comp. Lettering sono da considerarsi pezzi unici.
Thanks to the variations of the background graphics, each "progetto Fleur" and "Comp. Lettering" are to be considered unique pieces.



FASCIA LEGNO PAPIER
2,5x30
PPN53058

☞ 4

Decorazione realizzata in legno trattato e garantito per l'utilizzo nell'ambiente bagno. Il tipo di verniciatura fa in modo che non tema l'umidità, rendendo possibile la fugatura con normali stucchi ceramici epossidici. Dopo la posa in opera e la stuccatura, pulire il prima possibile con acqua avendo cura di asportare ogni residuo di stucco.
Decorative tile made in treated wood, guaranteed also for use in the bathroom. This kind of varnish protects from humidity, therefore it's possible filling with standard epossidic filler for ceramics. After placing and filling, please clean whitish water as soon as possible, carefully removing every mark left by the filler.

SIGILLANTI COORDINATI PER FUGHE
COORDINATED GROUT SEALANTS



CODICE SIGILLANTE SEALANT CODE	ABBINAMENTO MATCHING
SI219B kromos grigio cemento 0-8	Papier grigio
SI220B kromos antracite 0-8	Papier antracite
SI217M kromos grigio luce 0-8	Papier corda
SI218B kromos manhattan 0-8	Papier nocciola

IMBALLI / PACKAGING

FORMATI SIZES	☞ Thickness	📦 Pcs/Box	📦 Mq/Box	📦 Kg/Box	📦 Box/Pallet	📦 Mq/Pallet	📦 Kg/Pallet
30x75 / 12"x30"	9	5	1,125	17,60	36	40,50	654
60x60 / 24"x24"	9,5	3	1,08	23,00	40	43,20	940





L'unità minima di vendita per tutti gli articoli (fondi, decori e pezzi speciali) è la scatola completa.
 The minimum sales quantity for all items (plain tiles, decorations and special trims) is one full box.

Pezzi speciali e decori per effetto delle lavorazioni, possono presentare variazioni di tonalità.
 Due to working process special trims and decors, may show variation in tonality.

CARATTERISTICHE TECNICHE / TECHNICAL CHARACTERISTIC

CLASSIFICAZIONE SECONDO NORME UNI EN 14411 (ISO 13006) ALLEGATO G-Gruppo B1a
 CLASSIFICATION IN ACCORDANCE WITH UNI EN 14411 (ISO 13006) ANNEX G-Group B1a

GRES PORCELLANATO A MASSA COLORATA COLORED BODY PORCELAIN TILES	NORMA NORM	VALORE PRESCRITTO DALLE NORME VALUE PRESCRIBED FROM THE NORMS	VALORE ABK ABK VALUE
RESISTENZA AL GELO FROST RESISTANCE	UNI EN ISO 10545/12	RICHIESTA REQUIRED	INGELIVO FROST PROOF
COEFFICIENTE D'ATTRITO DINAMICO DYNAMIC FRICTION COEFFICIENT	B.C.R.A. C.A.	$\mu > 0,19$ SCIVOLOSITÀ PERICOLOSA - DANGEROUSLY SLIPPERY $0,20 < \mu < 0,39$ SCIVOLOSITÀ ECCESSIVA - EXCESSIVELY SLIPPERY $0,40 < \mu < 0,74$ ATTRITO SODDISFACENTE - SATISFACTORY GRIP $\mu > 0,75$ ATTRITO ECCELLENTE - EXCELLENT GRIP	> 0,40
	B.C.R.A. G.B.		> 0,40
COEFFICIENTE D'ATTRITO STATICO COEFFICIENT OF STATIC FRICTION	ASTM C. 1028 (S.C.O.F.)	SLIP RESISTANT (> 0,60)	> 0,60 DRY
			> 0,60 WET
CLASSIFICAZIONE ANTISDRUCCIOLO NON-SLIP CLASSIFICATION	DIN 51130	IN FUNZIONE DELL'AMBIENTE O DELLA ZONA DI LAVORO BASING ON THE ENVIRONMENT OR THE WORKING AREA	R9
RESISTENZA ALLO SCIOLIAMENTO SLIP RESISTANCE	DIN 51097	-	A

VARIAZIONE CROMATICA SHADE VARIATION	V3	 aspetto uniforme uniform appearance V1	 lieve variazione slight variation V2	 moderata variazione moderate variation V3	 forte variazione substantial variation V4
---	----	--	--	---	---



La riproduzione dei colori è approssimativa.
 Colour reproduction approximate.

ABK Group Industrie Ceramiche s.p.a.
 via S.Lorenzo N.24/a - 41034 Finale Emilia - Modena Italy
 tel. 0535 761311 - fax 0535 761320/92800/761351



• p a p i e r •



www.abk.it

