

TAHITI



ASCOT
EVERYTILE



**EVERYTILE
YOU DREAM**

INDICE

AMBIENTI RESIDENZIALI Home Spaces

BAGNO Bathroom	06
CUCINA Kitchen	17
SALA DA PRANZO Dining	15

AMBIENTI COMMERCIALI Commercials

RISTORANTE Restaurant	08
NEGOZIO Store	13

INDICE TECNICO Technical Index

COLORI colors	15
FORMATI Sizes	18
IMBALLI Packing	19
DATI TECNICI Technical Data	19

BAGNO
Bathroom

6



7

RIVESTIMENTO / WALL DECORO PAPEETE BLUE 33x100 / 13"x39,4"
<RIVESTIMENTO / WALL DUSK BLUE 33x100 / 13"x39,4" - GEM DUSK BLUE 33x100 / 13"x39,4"

RISTORANTE
Restaurant



8

RIVESTIMENTO / WALL CANNETO KOA 33x100 / 13"x39,4"
➤ RIVESTIMENTO / WALL CANNETO ACACIA 33x100 / 13"x39,4"



9



10

11





SALA DA PRANZO
Dining

BITECH®

Il frutto di un processo produttivo unico, basato su un sistema di doppia cottura tradizionale, unito all'impiego della tecnologia digitale più recente ed innovativa. Prende vita un prodotto dalla cifra stilistica inconfondibile, pratico e facile da installare, garanzia di sicurezza e igiene per i propri rivestimenti interni.

15

TAHITI

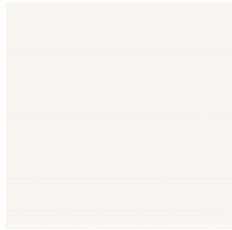
CUCINA Kitchen

BICOTTURA TRADIZIONALE PASTA BIANCA
Traditional double-fired white body

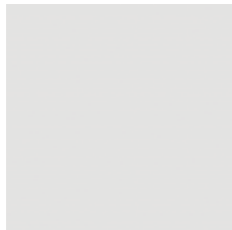


COLORI Colors

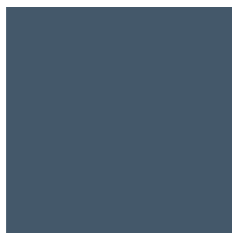
White



Ash



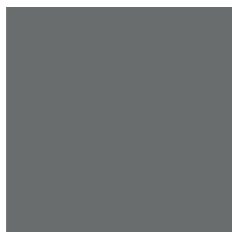
Dusk Blue



Jade



Titanium



Tangerine



FORMATI Size

33x100

13"x39,4"



FINITURE Finish

Naturale
Rettificato

SPESSORI Thickness

9,5mm

0,37"



TAHITI

COLORI
Colors

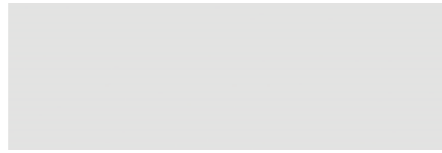
SPESSORE 9mm / NATURALE
Thickness 0,35" / Naturale

WHITE ATA3310R 46 ■



(cm) 33x100 Rett (ln) 13"x39,4" Rett

ASH ATA3304R 46 ■



(cm) 33x100 Rett (ln) 13"x39,4" Rett

DUSK BLUE ATA3330R 46 ■



(cm) 33x100 Rett (ln) 13"x39,4" Rett

GEM WHITE ATA3310GR 49 ■



(cm) 33x100 Rett (ln) 13"x39,4" Rett

GEM ASH ATA3304GR 49 ■



(cm) 33x100 Rett (ln) 13"x39,4" Rett

GEM DUSK BLUE ATA3330GR 49 ■



(cm) 33x100 Rett (ln) 13"x39,4" Rett

18 HEXAGON WHITE ATA3310ER 49 ■



(cm) 33x100 Rett (ln) 13"x39,4" Rett

HEXAGON ASH ATA3304ER 49 ■



(cm) 33x100 Rett (ln) 13"x39,4" Rett

JADE ATA3390R 46 ■



(cm) 33x100 Rett (ln) 13"x39,4" Rett

TITANIUM ATA3340R 46 ■



(cm) 33x100 Rett (ln) 13"x39,4" Rett

TANGERINE ATA3350R 46 ■



(cm) 33x100 Rett (ln) 13"x39,4" Rett

GEM JADE ATA3390GR 49 ■



(cm) 33x100 Rett (ln) 13"x39,4" Rett

GEM TITANIUM ATA3340GR 49 ■



(cm) 33x100 Rett (ln) 13"x39,4" Rett

GEM TANGERINE ATA3350GR 49 ■



(cm) 33x100 Rett (ln) 13"x39,4" Rett

TAHITI

DECORI
Colors

SPESSORE 9mm / NATURALE
Thickness 0,35" / Naturale

CANNETO ACACIA ATA33CACIR 49 ■



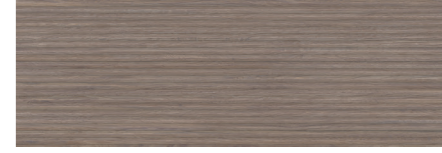
(cm) 33x100 Rett (ln) 13"x39,4" Rett

CANNETO KOA ATA33CKOAR 49 ■



(cm) 33x100 Rett (ln) 13"x39,4" Rett

CANNETO TIKI ATA33CTIKR 49 ■



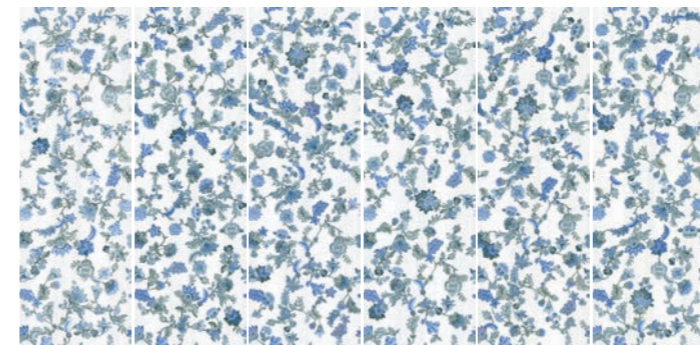
(cm) 33x100 Rett (ln) 13"x39,4" Rett

DECORO GEO 6 pz. ATA33DGEOR 56 ■



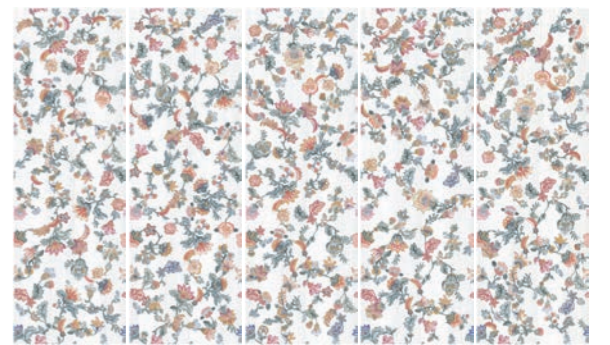
(cm) 33x100 Rett (ln) 13"x39,4" Rett

DECORO PAPEETE BLUE 6 pz. ATA33DPABR 56 ■



(cm) 33x100 Rett (ln) 13"x39,4" Rett

DECORO PAPEETE BIANCO 5 pz. ATA33DPAPR 56 ■



(cm) 33x100 Rett (ln) 13"x39,4" Rett

DECORO FOREST

7 pz.

ATA33DFORR

56 ■



(cm) 33x100 Rett

(In) 13"x39,4" Rett

SPESSORE 9mm / NATURALE
Thickness 0,35" / Naturale

IMBALLI

Packing






	FORMATO		PZ. / SC.	MQ / SC.	KG / SC.	SC. / PALLET	MQ / PALLET	KG / PALLET	SPESSORE	
	Size								Pcs. /Box	Sqm/Box
	cm	In								
	32,5x99,2	12,7"x39"	4	1,290	20,80	32	41,28	681	9mm	0,35"
GEM	32,5x99,2	12,7"x39"	4	1,290	20,80	32	41,28	681	9mm	0,35"
HEXAGON	32,5x99,2	12,7"x39"	4	1,290	20,80	32	41,28	681	9mm	0,35"
CANNETO	32,5x99,2	12,7"x39"	4	-	-	-	-	-	9mm	0,35"
DEC FOREST	32,5x99,2	12,7"x39"	4	-	-	-	-	-	9mm	0,35"
DEC PAPETE	32,5x99,2	12,7"x39"	4	-	-	-	-	-	9mm	0,35"
DEC GEO	32,5x99,2	12,7"x39"	4	-	-	-	-	-	9mm	0,35"

DATI TECNICI

Technical Data

BICOTTURA TRADIZIONALE PASTA BIANCA
Traditional double-fired white body

Norma di riferimento: EN 14411 BIII

CARATTERISTICHE TECNICHE TECHNICAL DATA	NORME NORMS	VALORI VALUE
 Assorbimento d'acqua Water absorption	ISO 10545 - 3	E _b >10%
 Resistenza all'attacco acido e basico Glaze resistance to acid and alkaline attack	ISO 10545 - 13	CONFORME
 Resistenza alle macchie Stain resistance	ISO 10545 - 14	CONFORME
 Resistenza al cavillo	ISO 10545 - 11	NESSUN CAVILLO
 Stonalizzazione Shading	-	V2

↓
SCARICA I CODICI PREZZO
Download the price codes



-
- **PREZZO AL METRO QUADRO**
Price per sqm
 - ▲ **PREZZO AL PEZZO**
Price per piece
 - **PREZZO AL METRO LINEARE**
Price to linear meter
 - **PREZZO A COMPOSIZIONE**
Price per set
-

SEDE LEGALE E OPERATIVA:

Via Croce, 80
41014 Solignano di Castelvetro (MO) Italy
Tel: +39 059 77 84 11
Fax: +39 059 77 84 44/43
info@ascot.it - ascot.it