



CEMENTO MODERNO



 **CISA CERAMICHE**
PER PASSIONE DAL 1954

Dal 1954 storia e tradizione ceramica.

Part of ceramic tile manufacturing history and tradition since 1954 .

Depuis 1954 histoire et tradition de la céramique.

Seit 1954: Geschichte und Tradition der Keramik.

История и традиция керамики с 1954 г.



50x50 19"x19" nat / rett · 25x50 9"x19" rett

Naturale e Rettificato

Natural and Straightened

Naturel et Rectifié

Natürlich und Geschliffen

Натуральная и Калиброванный

CEMENTO MODERNO

Effetti grafici delicati arricchiscono lo stile minimalista ispirato ai cementi.

Cemento Moderno, la nuova collezione realizzata da

Cisa Ceramiche nei formati 50x50 e 25x50.

Ideale per vestire superfici sobrie e moderne.

Delicate graphic effects that enhance the minimalist style inspired by concrete.
Cemento Moderno, the new collection from Cisa Ceramiche available in 50x50 and 25x50 sizes.
Ideal for floors and walls in sober, modern interiors.

Des effets graphiques délicats enrichissent le style minimaliste inspiré du béton.
Cemento Moderno, la nouvelle collection réalisée par Cisa Ceramiche dans les formats 50x50 et 25x50.
Pour habiller les sols et les murs intérieurs sobres et modernes.

Feine graphische Effekte, die den minimalistischen Stil des Materials mit Betonoptik gekonnt unterstreichen.
Cemento Moderna ist die neue Kollektion der Cisa Ceramiche in den Formaten 50x50 und 25x50 als Wand-
und Bodenfliese für moderne Innenausstattung mit schlichten Linien.

Los delicados efectos gráficos enriquecen el estilo minimalista inspirado en los cementos.
Cemento Moderno, la nueva colección de Cisa Ceramiche en los formatos 50x50 y 25x50.
Ideal para revestir superficies sobrias y modernas.

CEMENTO MODERNO

Bianco

Bianco 50x50 rett









CEMENTO MODERNO

Bianco, Antracite

Bianco 25x50 rett - Antracite 50x50 rett - Bacchetta Argento 1,5x50 rett



Decoro 3D antracite 25x50 rettificato



CEMENTO
MODERNO
Grigio chiaro

Grigio Chiaro 50x50 rett - Decoro 3D Antracite 25x50 rett

CEMENTO MODERNO

Antracite

Antracite 50x50 rett





CEMENTO MODERNO

Grigio chiaro



Avorio 25x50 rett - Cacao composizione Mix 2 25x50 rett - Cacao 25x50 rett - Cacao 50x50 rett







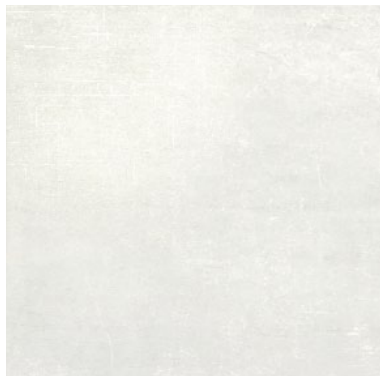
CEMENTO MODERNO

Mud, Avorio

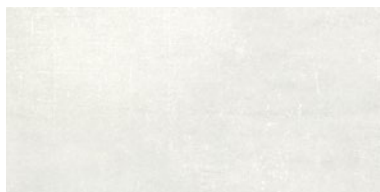
Avorio 25x50 rett - Mud 50x50 rett - Mud 25x50 rett - Bacchetta Rame 1,5x50 rett

CEMENTO MODERNO

Bianco



0156110 Bianco 50x50
0156111 Bianco 50x50 rett



0156112 Bianco 25x50 rett

Grigio chiaro



0156120 Grigio chiaro 50x50
0156121 Grigio chiaro 50x50 rett



0156122 Grigio chiaro 25x50 rett

Antracite



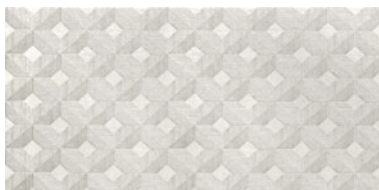
0156150 Antracite 50x50
0156151 Antracite 50x50 rett



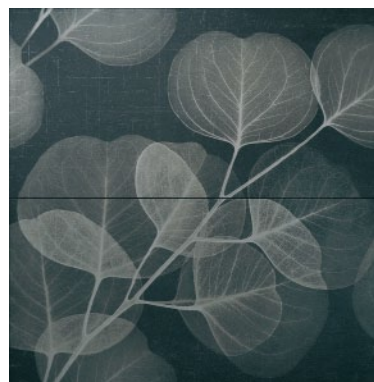
0156152 Antracite 25x50 rett



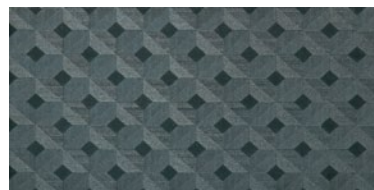
0156116 Bianco - Grigio chiaro
Composizione Mix 2 25x50 rett



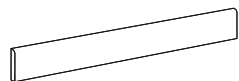
0156117 Decoro 3D bianco
Grigio chiaro 25x50 rett



0156156 Antracite composizione Mix 2
25x50 rett



0156157 Decoro 3D antracite
25x50 rett



BATTISCOPIA
9,5x50 · 3³/₄"x19⁷/₁₀"

- 0156115** Bianco
- 0156125** Grigio chiaro
- 0156155** Antracite
- 0156105** Avorio
- 0156135** Mud
- 0156145** Cacao

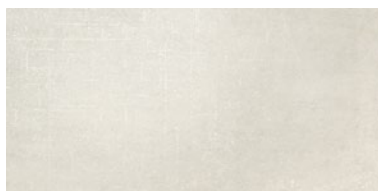
0156158 Bacchetta argento 1,5x50 rett

50x50 19"x19" · 25x50 9"x19"

Avorio



0156100 Avorio 50x50
0156101 Avorio 50x50 rett



0156102 Avorio 25x50 rett

Mud



0156130 Mud 50x50
0156131 Mud 50x50 rett



0156132 Mud 25x50 rett

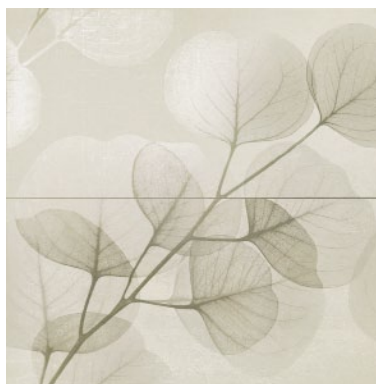
Cacao



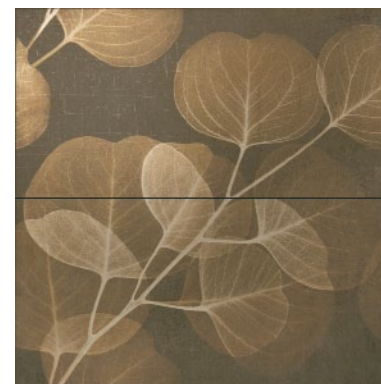
0156140 Cacao 50x50
0156141 Cacao 50x50 rett



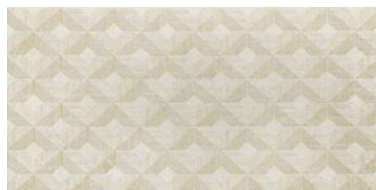
0156142 Cacao 25x50 rett



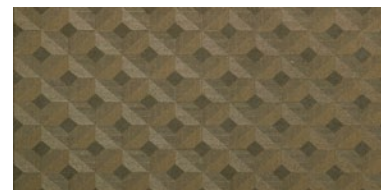
0156106 Avorio - Mud composizione mix 2
25x50 rett



0156146 Cacao composizione mix 2
25x50 rett



0156107 Decoro 3D Avorio - Mud
25x50 rett










0156147 Decoro 3D Cacao
25x50 rett

0156148 Bacchetta rame 1,5x50 rett

Imballi

Packaging - Emballages - Verpackungen - Упаковка

FORMATI Sizes - Formats - Formate	Pz x 	m ² x 	Kg x 	 x 	m ² x 	kg x 
50x50 nat	6	1,50	32	24	36	788
50x50 rett	6	1,47	32,15	24	35,28	792
25x50 rett	6	0,73	18,50	48	35,04	908
Dec. Comp. Mix 2 pz 25x50 rett	4	-	-	-	-	-
Decoro 3D 25x50 rett	4	-	-	-	-	-
Bacchette 1,5x50 rett	6	-	-	-	-	-
Battiscopa 9,5x50	20	-	-	-	-	-

Consigli per la posa

Per il prodotto rettificato, si consiglia di posare la piastrella con una fuga di 2 mm.

Laying tips

For the straight-edged product, we recommend laying the tile with a 2 mm joint.

Conseils pour la pose

En ce qui concerne le produit rectifié, il est recommandé de poser le carreau avec un joint de 2 mm.

Empfehlungen zur Verlegung

Beim kalibrierten Produkt wird geraten, die Fliese mit einer Fuge von 2 mm zu verlegen.

Рекомендации по укладке

Для калиброванных изделий рекомендуется укладка с швом 2 мм.



Caratteristiche tecniche

Technical features - Caractéristiques techniques - Technische eigenschaften - Технические характеристики

Gres porcellanato colorato in massa - Coloured body porcelain stoneware - Grès cérame coloré dans la masse - In der Masse gefärbtes Feinsteinzeug - Керамогранит, окрашенный по всей толщине

GRUPPO DI APPARTENENZA - GROUPE D'APPARTENANCE - ZUGEHÖRIGKEITS - GROUPE - SPECIFIC GROUPING - GRUPO DE PARTENENCIA - SECONDO EN 14411 **B I A**

SIMBOLOGIA SYMBOLICS SYMBOLES SYMBOLE SIMBOLOGIAS	CARATTERISTICA FEATURES CARACTÉRISTIQUES EIGENSCHAFTEN CARACTERÍSTICAS	UNITÀ DI MISURA UNIT OF MEASUREMENT UNITÉ DE MESURE MASSEINHEIT UNIDAD DE MEDIDA	VALORE MEDIO CISA CISA MEAN VALUE VALEUR MOYENNE CISA DURCHSCHNITTS-WERF-CISA VALOR MEDIO CISA	VALORE PRESCRITTO FIXED VALUE VALEUR PRESCRITE VORGESCHRIEBENER WERT VALOR ESTABLECIDO	METODO DI PROVA TEST METHOD MÉTHODE D'ESSAI PRÜFMETHODE MÉTODO DE ENSAYO
	DIMENSIONE LATI DIMENSIONS-LENGTH AND WIDTH - DIMENSIONS-LONGUEURET LARGEUR MASSE-LÄNGE UND BREITE - DIMENSIONES-LONGITUD Y ANCHO	%	CONFORME CONFORM - CONFORME GLEICHMÄSSIG - CONFORME	+/- 0,6 MAX	UNI EN ISO 10545-2
	RETTILINEITÀ DEI LATI SIDE STRAIGHTNESS - RECTITUDE DES ARÊTES GERÄCHTLINGKEIT DER KANTEN - RECTILINIDAD DE LOS LATOS	%	CONFORME CONFORM - CONFORME GLEICHMÄSSIG - CONFORME	+/-0,5 MAX	UNI EN ISO 10545-2
	ORTOGONALITÀ DEGLI SPIGOLI CORNER SQUARENESS - ANGULARITÉ RECHTWINKLIGKEIT DER KANTEN - ORTOGONALIDAD DE LAS ESQUINAS	%	CONFORME CONFORM - CONFORME GLEICHMÄSSIG - CONFORME	+/-0,6 MAX	UNI EN ISO 10545-2
	PLANARITÀ FLATNESS - PLANEITÉ EBENFLÄCHIGKEIT - PLANEIDAD	%	CONFORME CONFORM - CONFORME GLEICHMÄSSIG - CONFORME	+/-0,6 MAX	UNI EN ISO 10545-2
	SPESSORE THICKNESS - ÉPAISSEUR DICKE - GROSOR	%	CONFORME CONFORM - CONFORME GLEICHMÄSSIG - CONFORME	+/-5 MAX	UNI EN ISO 10545-2
	ASSORBIMENTO D'ACQUA WATER ABSORPTION - ABSORPTION D'EAU WASSERAUFNAHME - ABSORCIÓN DE AGUA	%	CONFORME CONFORM - CONFORME GLEICHMÄSSIG - CONFORME	≤ 0,5	UNI EN ISO 10545-3
	SFORZO DI ROTTURA BREAKING STRENGTH - CONTRAINTE DE RUPTURE BRUCHKRAFT - ESFUERZO DE ROTURA	N	CONFORME CONFORM - CONFORME GLEICHMÄSSIG - CONFORME	≥ 1300 se sp ≥ 7,5 mm ≥ 700 se sp < 7,5 mm	UNI EN ISO 10545-4
	MODULO DI ROTTURA MODULUS OF RUPTURE - COEFFICIENT DE RUPTURE BRUCHMODUL - MÓDULO DE ROTURA	N/mm ²	CONFORME CONFORM - CONFORME GLEICHMÄSSIG - CONFORME	≥ 35	UNI EN ISO 10545-4

I colori e gli effetti riportati sul presente catalogo sono indicativi per i limiti consentiti dalla stampa; per questo non possono essere vincolanti e costituire base per eventuali contestazioni

The colours and the effects on this catalogue are indicative for the limits allowed by the press; for this reason, they cannot be binding and be the base for possible claims.



Via Statale 99/D
42013 Dinazzano di Casalgrande (RE)

Tel. +39 0522 773602
Fax +39 0522 773650 (Italia)
+39 0522 773649 (Estero)

Info:
marketing@ceramichecisa.it

Site:
www.ceramichecisa.it

RICCHETTI GROUP 

