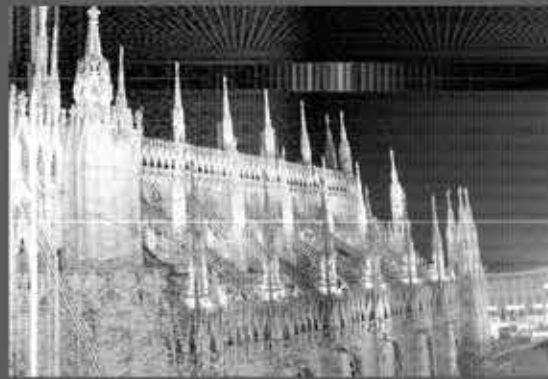




MI



LA



NO

2015



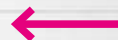




MI 2  
LA 0  
NO 1  
5



Zona Brera mix 20x20.8"x8"  
San Babila mix 20x20.8"x8"  
Progetto Nero 20x20.8"x8"







Zona Brera  
Interno 103  
20x20.8"x8"



San Babila interno 101  
20x20.8"x8"  
Progetto Nero  
20x20.8"x8"  
Progetto Nero lappato  
20x20.8"x8"



MI 2  
LA 0  
NO 15

San Babila  
Interno 104  
20x20.8"x8"  
Progetto  
Bianco  
20x20.8"x8"



San Babila interno 102 20x20.8"x8"  
 Progetto Nero 20x20.8"x8"  
 Progetto Nero lappato 20x20.8"x8"



MI 2  
 LA 0  
 NO 15



San Babila mix 20x20.8"x8"  
 Progetto Nero 20x20.8"x8"  
 Progetto Bianco 20x20.8"x8"



San Babila interno 102 20x20.8"x8"  
 Zona Brera interno 102 20x20.8"x8"  
 Progetto Nero 20x20.8"x8"  
 Rivestimento: White Line, collezione



Arredo bagno Cerasa - [www.cerasa.it](http://www.cerasa.it)



Zona Brera interno 101 20x20.8"x8"  
Progetto Nero 20x20.8"x8"  
Progetto bianco 20x20.8"x8"



MI 2  
LA 0  
NO 15







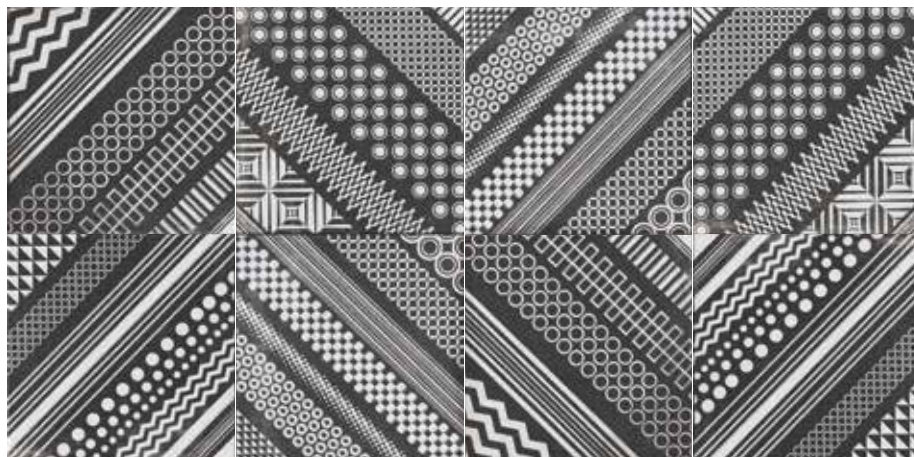
Cerasa

Arredo bagno Cerasa - [www.cerasa.it](http://www.cerasa.it)

MI  
LA  
NO

2015

## SAN BABILA



San Babila mix  
20x20.8"x8"

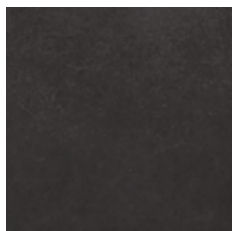


progetto  
20x20



progetto  
bianco  
20x20.8"x8"

progetto  
bianco  
lappato  
20x20.8"x8"



progetto  
nero  
20x20.8"x8"

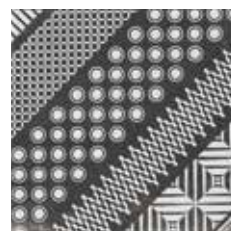
progetto  
nero  
lappato  
20x20.8"x8"



San Babila  
interno 101  
20x20.8"x8"



San Babila  
interno 102  
20x20.8"x8"

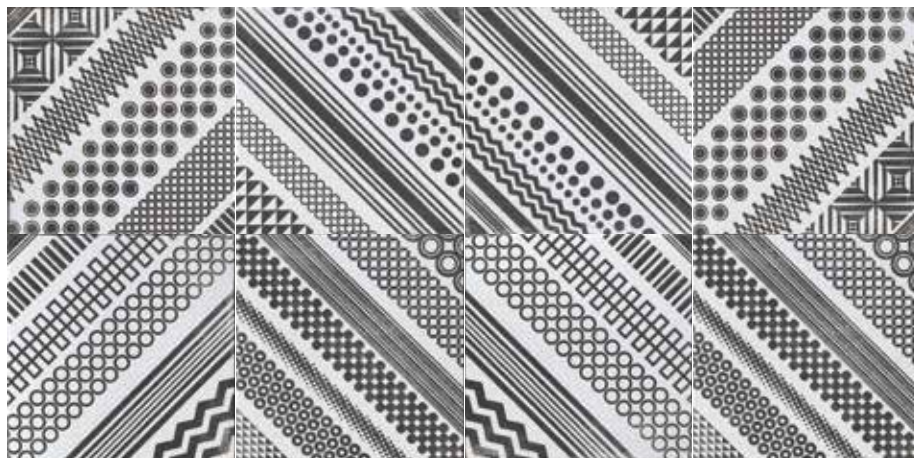


San Babila  
interno 103  
20x20.8"x8"



San Babila  
interno 104  
20x20.8"x8"

## ZONA BRERA



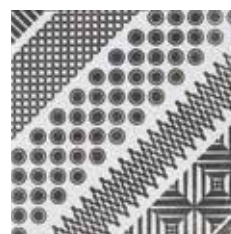
Zona Brera mix  
20x20.8"x8"



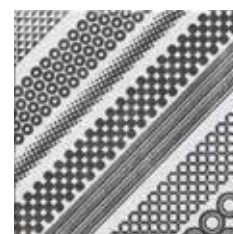
Zona Brera  
interno 101  
20x20.8"x8"



Zona Brera  
interno 102  
20x20.8"x8"

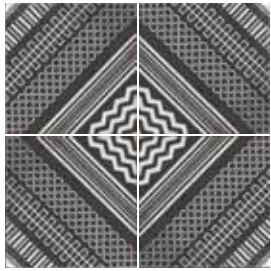


Zona Brera  
interno 103  
20x20.8"x8"

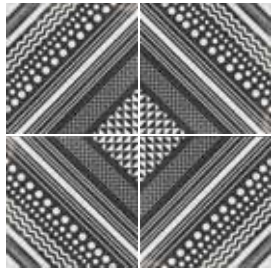


Zona Brera  
interno 104  
20x20.8"x8"

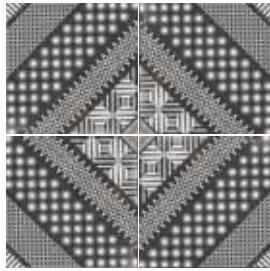
San Babila  
interno 101



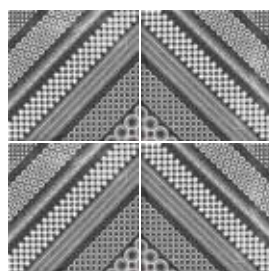
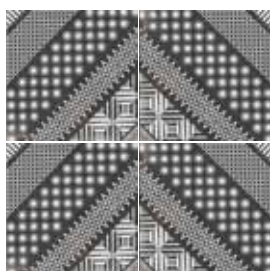
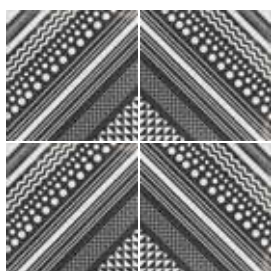
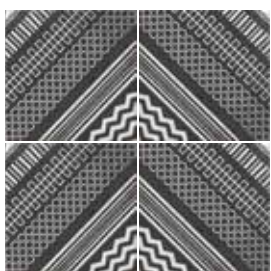
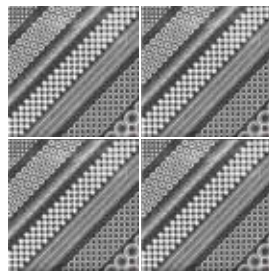
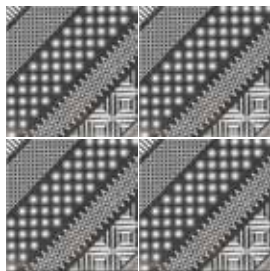
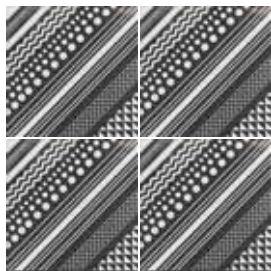
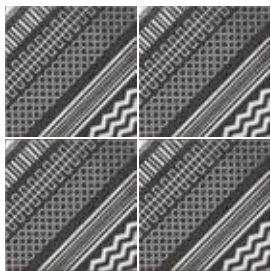
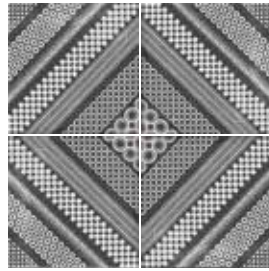
San Babila  
interno 102



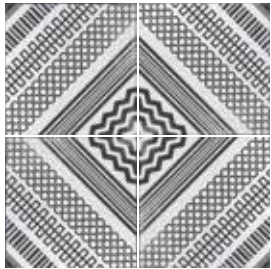
San Babila  
interno 103



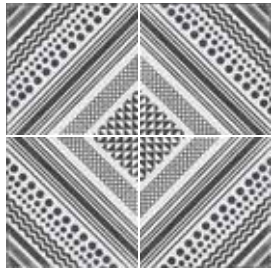
San Babila  
interno 104



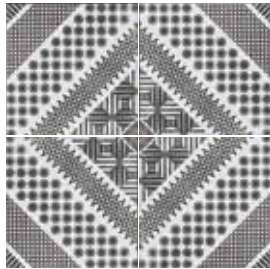
Zona Brera  
interno 101



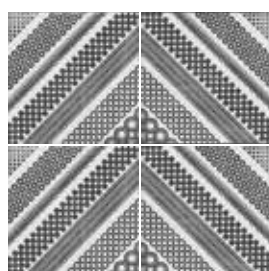
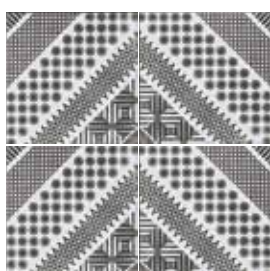
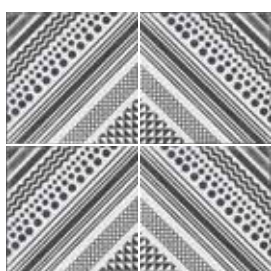
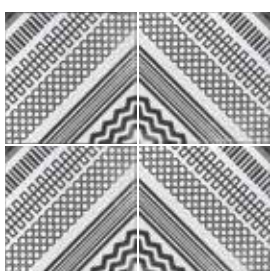
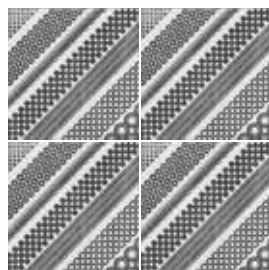
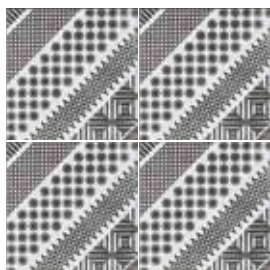
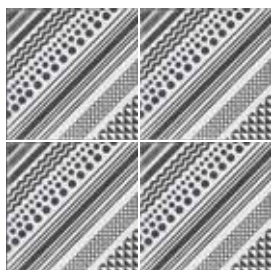
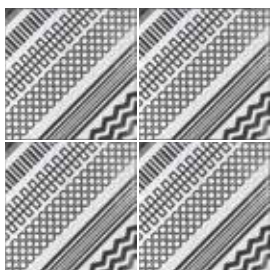
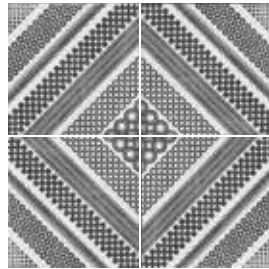
Zona Brera  
interno 102



Zona Brera  
interno 103



Zona Brera  
interno 104

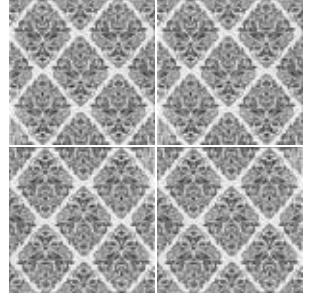
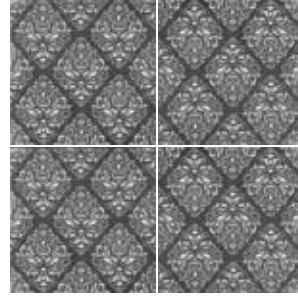
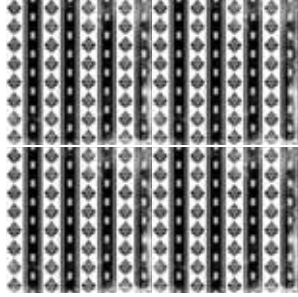


**Imballaggi.Packing.**  
Emballage. Verpackung. Упаковка

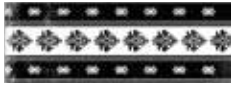
	BOX			PALLET	
	PC	SQM	KGS	BOXES	SQM
20x20 . 8"x8" mq	26	1,04	21,00	54	56,16
20x20 . 8"x8" pzz	4				

				4	20x20 . 8"x8" pzz
			26	1,04	21,00
		54	56,16		
		PC	SOM	KGS	BOXES
		SOM			
		BOX		PALLET	

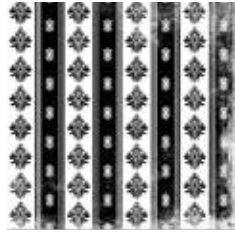
Imballaggi: Packing, Emballage, Verpackung, Упаковка



*Isabelle Via Mangutta*  
7,5x20,3"x8"



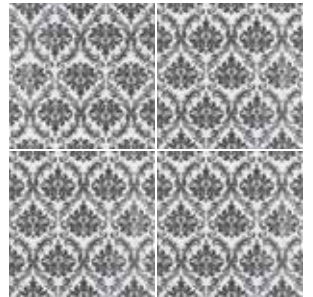
*Via Mangutta*  
20x20,8"x8"



*Via Condotti nero*  
20x20,8"x8"



*Via Condotti bianco*  
20x20,8"x8"



*Via Frattina nero*  
20x20,8"x8"



*Via Frattina bianco*  
20x20,8"x8"



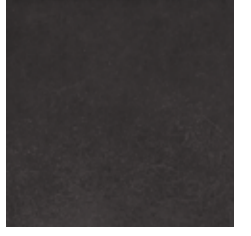
*Via Sistina*  
20x20,8"x8"





progetto  
nero  
lappato  
20x20,8"x8"

progetto  
nero  
20x20,8"x8"



progetto  
bianco  
lappato  
20x20,8"x8"

progetto  
bianco  
20x20,8"x8"



progetto  
20x20

*Piazza di Spagna serie*  
20x20,8"x8"



Piazza '53

*Via Sistina 20x20.8"x8"*  
*Progetto Nero 20x20.8"x8"*



# Poma '53

*Piazza di Spagna serie 20x20.8"x8" - Progetto Nero 20x20.8"x8"*





Via Frattina bianco 20x20,8"x8"  
 Via Margutta 20x20,8"x8"  
 Testello Via Margutta 7,5x20,3"x8"  
 Progetto Bianco 20x20,8"x8"  
 Progetto Nero 20x20,8"x8"





*Via Frattina bianco 20x20.8"x8"*  
*Via Frattina nero 20x20.8"x8"*  
*Via Sastina 20x20.8"x8"*  
*Progetto Nero 20x20.8"x8"*  
*Progetto Bianco 20x20.8"x8"*

*Via Conalotti nero 20x20.8"x8"*  
*Via Conalotti bianco 20x20.8"x8"*  
*Progetto Bianco 20x20.8"x8"*  
*Progetto Nero 20x20.8"x8"*

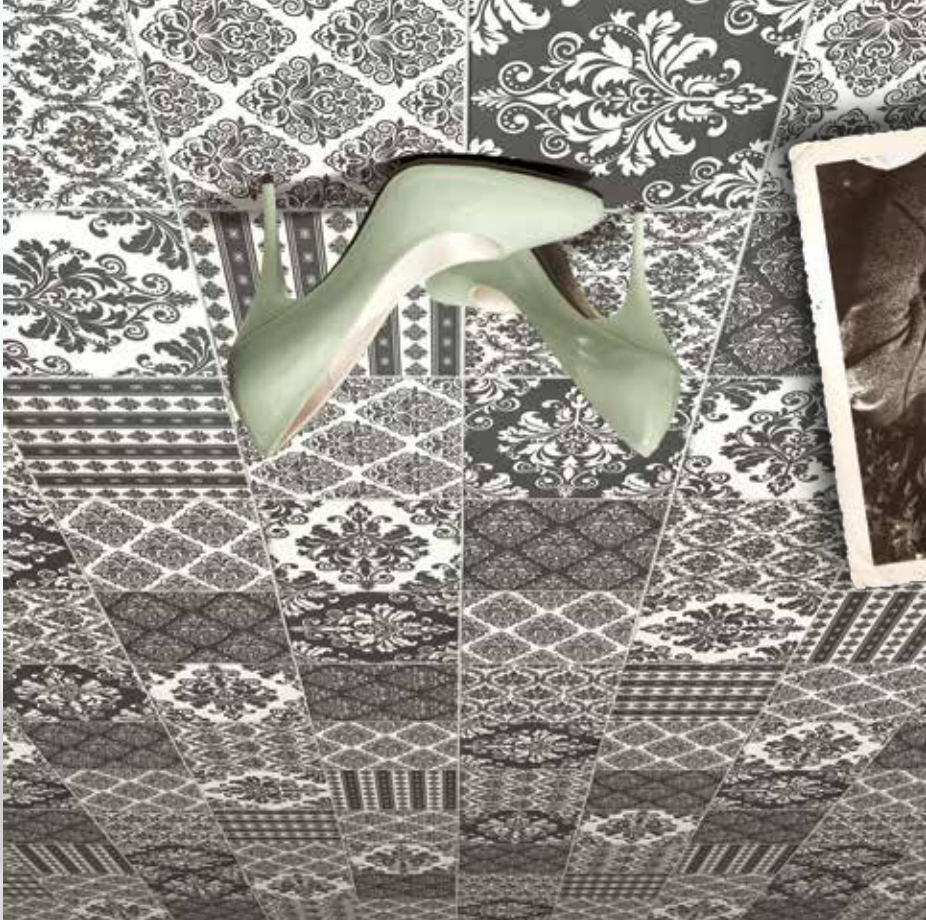






Posma '53





*Piazza di Spagna serie 20x20,8"x8"*



*Piazza di Spagna serie 20x20,8"x8"*  
Progetto Nero 20x20,8"x8"

Posma '53





www.cir.it



# Poma '53

