

RAFFINATA
ARMONIA

REFINED
HARMONY

wa
ve





W

INDEX

SWEET	05
FRAGRANCE	06
GOLD	08
SHE&HE	11
CREATIVE	14
STRIPE	17
GLAMOUR	18



THE PLEASURE OF
CONTRASTING TONES

GL GOSS SY

LA PIACEVOLEZZA

DEI CONTRASTI

TIMBRICI



WAVE W
WAVE A
WAVE B
SUGAR A MIX



INTRECCIO

EMOZIONALE

DI ELEMENTI

FLOREALI

EMOTIONAL WEAVE OF
FLORAL ELEMENTS



F

RAGRANCE



CALDE VIBRAZIONI

TONO SU TONO

WARM MATCHING
VIBRATIONS



WAVE G
FRAGRANCE W



SOLD

LA RICCHEZZA
ESPRESSIVA DELL'ORO
E DEI LUSTRI

THE EXPRESSIVE
RICHNESS OF GOLD AND
LUSTER





She & He

FEELING

WAVE W
WAVE SHE W12
WAVE HE W12
WAVE DG



TACTILE SENSATIONS AT
THE TOUCH OF LIGHT

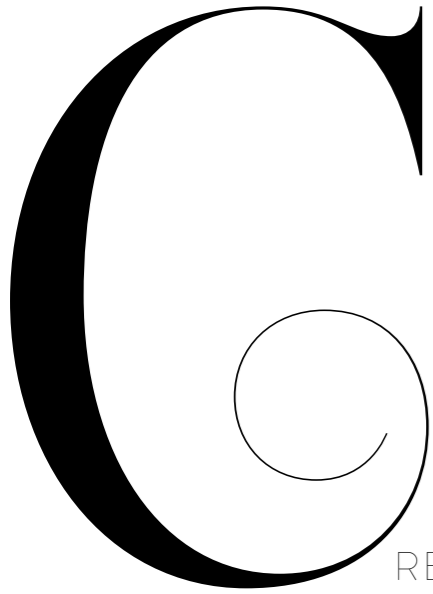
M A T

SENSAZIONI

TATTILI AL

TOCCO

DELLA LUCE



REATIVE



IL PIACEVOLE INNESTARE
DI DECORI FANTASIA

THE ENJOYABLE ENGAGEMENT
OF PATTERNED DECORATIONS



WAVEMATT W
B.WAVEMATT
FLATLACE W1



WAVEMATT G
WAVEFLAT G
FLATSTRIPE G MIX



TEXTURE ELEGANTEMENTE
RITMATE DA BANDE
E COLORI

TEXTURES ELEGANTLY
ALTERNATED WITH STRIPES
AND COLOURS

S

LAMOUR

MORBIDE

ESPRESSIONI

DI CREATIVITÀ



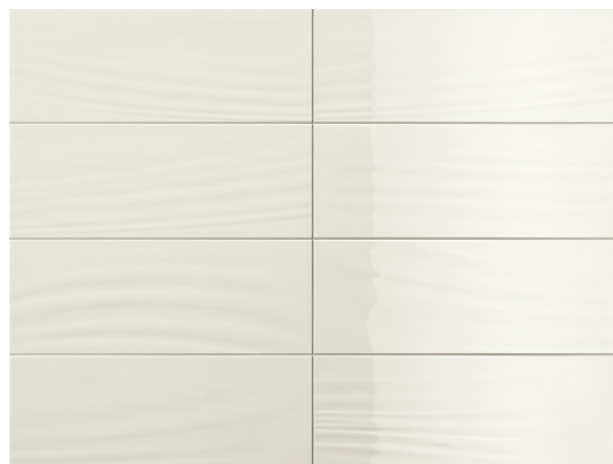
SOFT EXPRESSIONS
OF CREATIVITY

S



WAVEFLAT W
WAVEFLAT A
FLATSCENT W MIX

BICOTTURA DA RIVESTIMENTO / DOUBLE-FIRED WALL TILE



WAVE W
12,5X33,3-4.9"X13.1"
7,8

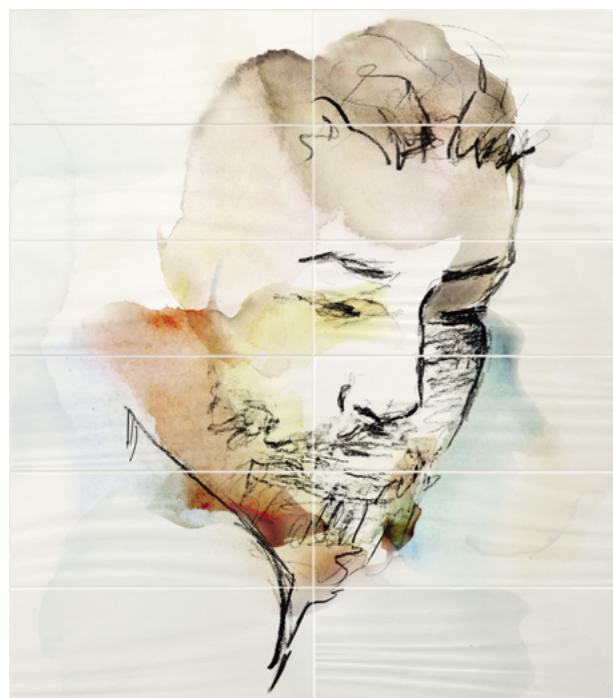


FRAGRANCE W
12,5X33,3-4.9"X13.1"
9



GOLD W MIX
12,5X33,3-4.9"X13.1"

B.WAVE
0,5X33,3-0.2"X13.1"



WAVE HE W12
12,5X33,3-4.9"X13.1"



WAVE SHE W12
12,5X33,3-4.9"X13.1"

BICOTTURA DA RIVESTIMENTO / DOUBLE-FIRED WALL TILE



WAVE A
12,5X33,3-4.9"X13.1"
7,8



FRAGRANCE A
12,5X33,3-4.9"X13.1"
9



GOLD A MIX
12,5X33,3-4.9"X13.1"

B. WAVE
0,5X33,3-0.2"X13.1"



SUGAR A MIX
12,5X33,3-4.9"X13.1"

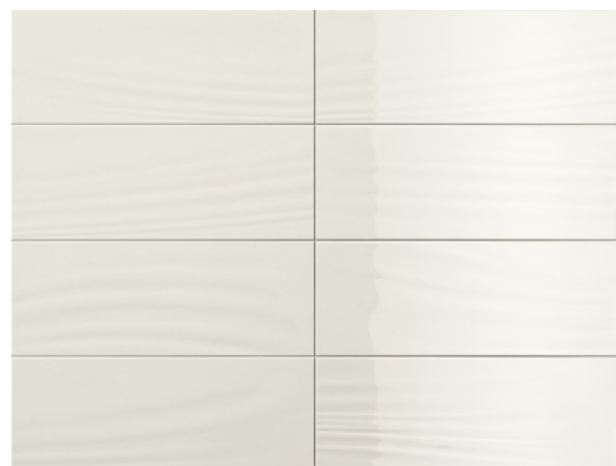


WAVE B
12,5X33,3-4.9"X13.1"
7,8



WAVE TO
12,5X33,3-4.9"X13.1"
7,8

BICOTTURA DA RIVESTIMENTO / DOUBLE-FIRED WALL TILE



WAVE W
12,5X33,3-4.9"X13.1"
7,8

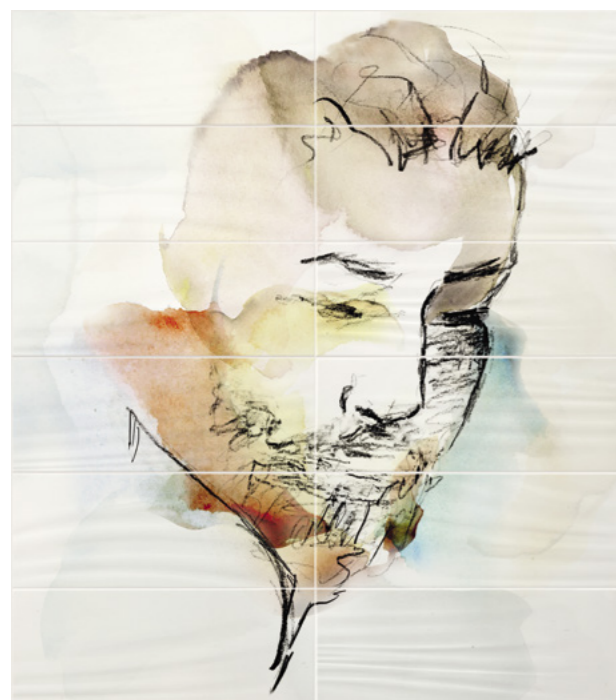


FRAGRANCE W
12,5X33,3-4.9"X13.1"
9



GOLD W MIX
12,5X33,3-4.9"X13.1" ▲

B.WAVE
0,5X33,3-0.2"X13.1" ▲



WAVE HE W12
12,5X33,3-4.9"X13.1" ▲



WAVE SHE W12
12,5X33,3-4.9"X13.1" ▲

BICOTTURA DA RIVESTIMENTO / DOUBLE-FIRED WALL TILE



WAVE G
12,5X33,3-4.9"X13.1"
7,8



FRAGRANCE G
12,5X33,3-4.9"X13.1"
9



GOLD G MIX
12,5X33,3-4.9"X13.1" ▲

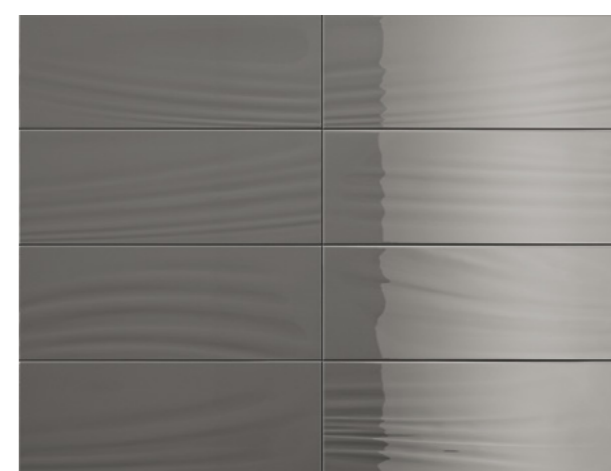
B.WAVE
0,5X33,3-0.2"X13.1" ▲



SUGAR G MIX
12,5X33,3-4.9"X13.1" ▲

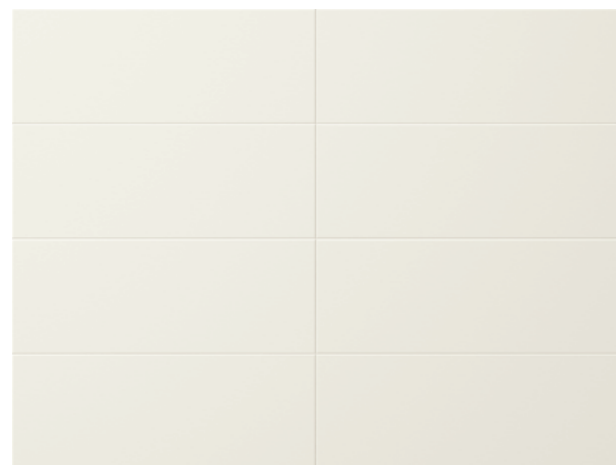


WAVE BG
12,5X33,3-4.9"X13.1"
7,8

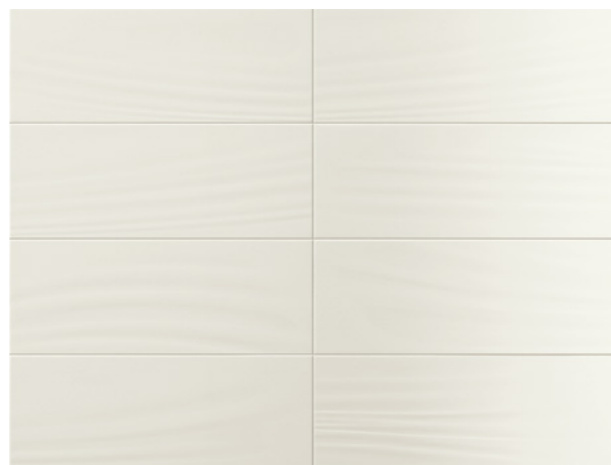


WAVE DG
12,5X33,3-4.9"X13.1"
7,8

BICOTTURA DA RIVESTIMENTO / DOUBLE-FIRED WALL TILE



WAVEFLAT W
12,5X33,3-4.9"X13.1"
7,8



WAVEMATT W
12,5X33,3-4.9"X13.1"
7,8



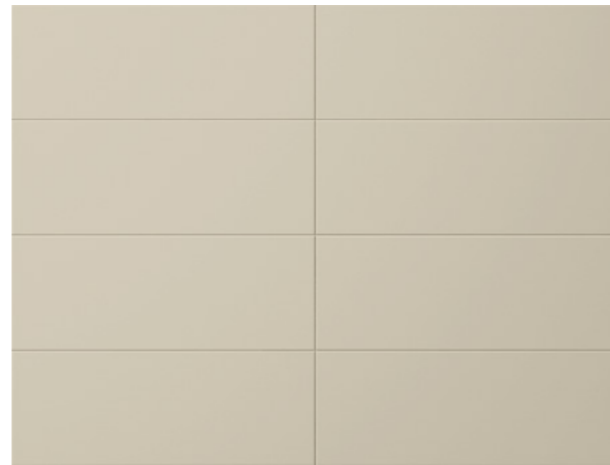
FLATLACE W1
12,5X33,3-4.9"X13.1"

B.WAVEMATT
0,5X33,3-0.2"X13.1"

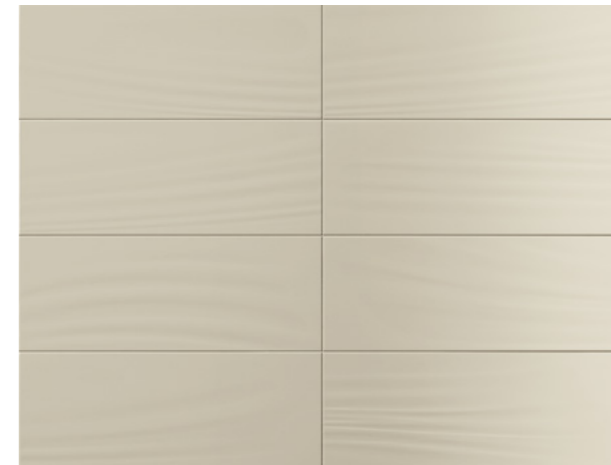


FLATSCENT W MIX
12,5X33,3-4.9"X13.1"

BICOTTURA DA RIVESTIMENTO / DOUBLE-FIRED WALL TILE



WAVEFLAT A
12,5X33,3-4.9"X13.1"
7,8

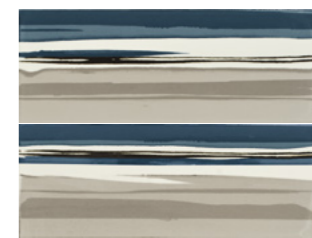


WAVEMATT A
12,5X33,3-4.9"X13.1"
7,8

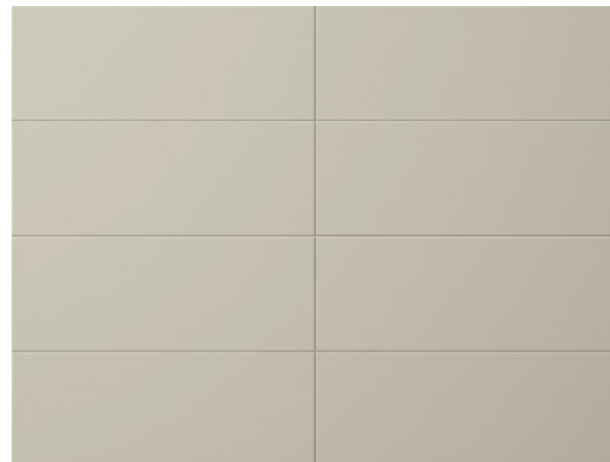
B.WAVEMATT
0,5X33,3-0.2"X13.1"



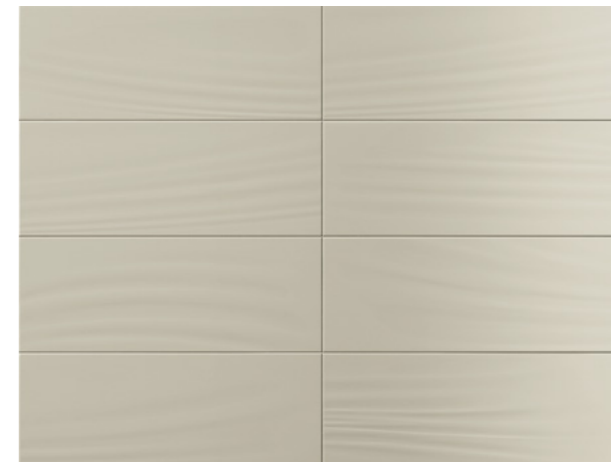
FLATSTRIPE AMIX
12,5X33,3-4.9"X13.1"



FLATSTRIPE GMIX
12,5X33,3-4.9"X13.1"



WAVEFLAT G
12,5X33,3-4.9"X13.1"
7,8



WAVEMATT G
12,5X33,3-4.9"X13.1"
7,8

Simbolo gia

SYMBOLS

INDICAZIONI D'USO

INDICATIONS FOR USE



RIVESTIMENTO
WALL TILES

DESTINAZIONI D'USO

SUGGESTED APPLICATIONS



ABITAZIONI
DOMESTIC PURPOSE

STRUTTURA

STRUCTURE



LI LISCIO
SMOOTH



ST STUTTURATO
SLATE CUT

FINITURA

FINISH



N NATURALE
NATURAL



L LEVIGATO
POLISHED

ASPETTO SUPERFICIALE

SURFACE LOOK



OPACO
MATT



LUCIDO
GLOSSY

BORDO

EDGE



DRITTO
STRAIGHT

STONALIZZAZIONE

SHADE VARIATION



V1

▲ **PRODOTTO VENDUTO UNICAMENTE A SCATOLA INTERA. IL PRODOTTO NON IDENTIFICATO CON TALE SIMBOLO È DA CONSIDERARSI IN VENDITA AL MQ.**
PRODUCT SOLD ONLY IN COMPLETE BOXES. IF THE PRODUCT IS NOT MARKED WITH THIS SYMBOL IT SHOULD BE CONSIDERED AS SOLD BY M².

CERTIFICAZIONI

CERTIFICATIONS

LA NATURA E LA TECNOLOGIA SI FONDONO PER DAR VITA A UN NUOVO CONCETTO DI CERAMICA CHE METTE AL CENTRO IL RAPPORTO TRA L'UOMO E L'AMBIENTE; UN BINOMIO INSCINDIBILE PER IL CONSEGUIMENTO CONSAPEVOLE DEI PRINCIPI DI ECO-EFFICIENZA AZIENDALE ED ECO-COMPATIBILITÀ AMBIENTALE SIGILLATO DA IMPORTANTI RICONOSCIMENTI.

NATURE AND TECHNOLOGY COMBINE TO GIVE BIRTH TO A NEW CONCEPT IN CERAMIC TILES WHICH PLACES THE RELATIONSHIP BETWEEN MAN AND THE ENVIRONMENT AT THE CENTRE; AN INSEPARABLE COMBINATION FOR THE CONSCIOUS ACHIEVEMENT OF ECO-EFFICIENT CORPORATE PRINCIPLES AS WELL AS THOSE OF ENVIRONMENTAL ECO-COMPATIBILITY, SEALED WITH IMPORTANT RECOGNITIONS.

ISO 14001

IL SISTEMA DI GESTIONE AMBIENTALE DI COOPERATIVA CERAMICA D'IMOLA - IN RIFERIMENTO ALLA NORMA UNI EN ISO 14001 - È STATO IMPOSTATO PERSEGUENDO I SEGUENTI PRINCIPI:

- SALVAGUARDIA DELL'AMBIENTE E DELLE RISORSE NATURALI.
- POLITICA ENERGETICA EFFICACE ED EFFICIENTE.
- RISPETTO PER L'ECOSISTEMA.

THE ENVIRONMENTAL MANAGEMENT SYSTEM OF COOPERATIVA CERAMICA D'IMOLA - IN REFERENCE TO THE UNI EN ISO 14001 NORMATIVE - WAS IMPOSED ON THE BASIS OF THE FOLLOWING PRINCIPLES:

- PROTECTION OF THE ENVIRONMENT AND OF NATURAL RESOURCES.
- EFFICIENT AND EFFECTIVE ENERGY POLICY.
- RESPECT FOR THE ECOSYSTEM.



ISO 9001

COOPERATIVA CERAMICA D'IMOLA HA OTTENUTO LA CERTIFICAZIONE DEL SISTEMA DI QUALITÀ IN RIFERIMENTO ALLA NORMA UNI EN ISO 9001, PER LA PROGETTAZIONE, PRODUZIONE E VENDITA DI PIASTRELLE CERAMICHE IN TUTTE LE TIPOLOGIE PRODUTTIVE.

L'IMPLEMENTAZIONE DI TALE SISTEMA HA I SEGUENTI OBIETTIVI:

- PERSEGUIRE, ATTRAVERSO UN'ADEGUATA GESTIONE DELLE RISORSE TECNICHE E IMPIANTISTICHE, IL CONTINUO MIGLIORAMENTO DEI PROCESSI PRODUTTIVI;
- GARANTIRE IL CORRETTO IMPIEGO, L'EFFICIENZA, L'ATTENDIBILITÀ ED AFFIDABILITÀ DEI RISULTATI DI MISURE E PROVE, ATTRAVERSO LA PIANIFICAZIONE DELLA MANUTENZIONE ED IL CONTROLLO DI IMPIANTI, APPARECCHIATURE E STRUMENTAZIONI;
- CONTRIBUIRE AL MIGLIORAMENTO DEL CONTESTO SOCIALE DI CUI È PARTE, NEL RISPETTO DELLE PERSONE E DELL'AMBIENTE IN CUI È INTEGRATA.

COOPERATIVA CERAMICA D'IMOLA HAS OBTAINED THE QUALITY SYSTEM CERTIFICATION, IN RELATION TO THE UNI EN ISO 9001 NORMATIVE, FOR THE DESIGN, PRODUCTION AND MARKETING OF CERAMIC TILES FOR ALL OF THE PRODUCTION TYPES.

IMPLEMENTATION OF THIS SYSTEM - IN RELATION TO THE UNI EN ISO 9001 NORMATIVE - HAS THE FOLLOWING OBJECTIVES:

- ACHIEVEMENT, THROUGH ADEQUATE MANAGEMENT OF THE TECHNICAL AND SYSTEM RESOURCES, OF THE ONGOING IMPROVEMENT OF THE PRODUCTION PROCESSES.
- GUARANTEE THE CORRECT USE, EFFICIENCY, RELIABILITY AND DEPENDABILITY OF THE RESULTS OF THE MEASUREMENTS AND TESTS THROUGH THE PLANNING OF THE MAINTENANCE AND THE CONTROL OF THE SYSTEMS, EQUIPMENT AND INSTRUMENTATION.
- CONTRIBUTE TO THE IMPROVEMENT OF THE SOCIAL CONTEXT OF WHICH IT IS PART AND IN TERMS OF THE PEOPLE AND THE ENVIRONMENT INTO WHICH IT IS INTEGRATED.



EMAS

COOPERATIVA CERAMICA D'IMOLA, ATTUANDO UNA PRECISA POLITICA AZIENDALE DI SVILUPPO SOSTENIBILE, HA OTTENUTO LA REGISTRAZIONE ECO-MANAGEMENT AND AUDIT SCHEME (EMAS), UN IMPORTANTE RICONOSCIMENTO A LIVELLO EUROPEO, RELATIVO AI SITI PRODUTTIVI, VOLTO AL CONTINUO MIGLIORAMENTO DEGLI STANDARD PRODUTTIVI E ALLA SENSIBILIZZAZIONE DI TUTTO IL PERSONALE SOTTO IL PROFILO DELLA SALVAGUARDIA AMBIENTALE.

THROUGH THE IMPLEMENTATION OF A PRECISE COMPANY POLICY ON SUSTAINABLE DEVELOPMENT, COOPERATIVA CERAMICA D'IMOLA HAS OBTAINED ECO-MANAGEMENT AND AUDIT SCHEME (EMAS) REGISTRATION. THIS IS AN IMPORTANT RECOGNITION ON A EUROPEAN LEVEL THAT AIM AT THE CONTINUOUS IMPROVEMENT OF PRODUCTION STANDARDS AND AWARENESS OF ALL OF ITS EMPLOYEES IN TERMS OF PROTECTING THE ENVIRONMENT. THE EMAS SYSTEM IS A VOLUNTARY AWARENESS FOR THOSE COMPANIES COMMITTED TO EVALUATING AND IMPROVING THEIR ENVIRONMENTAL EFFICIENCY THROUGH A MORE RESPONSIBLE CHOICE OF BUYING AND MANAGEMENT, A MORE CAREFUL USE OF AIR, WATER, TERRITORY, RAW MATERIALS AND ENERGY.



LEED

COOPERATIVA CERAMICA D'IMOLA È MEMBRO DEL GREEN BUILDING COUNCIL ITALIA, CHE OPERA PER LA DIFFUSIONE DEI CRITERI DEL MARCHIO LEED. LE PIASTRELLE, IN RELAZIONE ALLE CARATTERISTICHE E AL PROCESSO PRODUTTIVO CON CUI SONO REALIZZATE, POSSONO CONTRIBUIRE AD OTTENERE CREDITI L.E.E.D (LEADERSHIP IN ENERGY AND ENVIRONMENTAL DESIGN). IL LEED È UN SISTEMA DI CERTIFICAZIONE ENERGETICO - AMBIENTALE DEGLI EDIFICI CHE PREVEDE L'ATTRIBUZIONE DI UN PUNTEGGIO, ASSEGNATO IN FUNZIONE DELLA COMPROVATA CONFORMITÀ RISPETTO AD ALCUNI "CREDITI" PRESTABILITI. TALE CONTRIBUTO VA VALUTATO NEL TOTALE DEI MATERIALI UTILIZZATI NELL'EDIFICIO.

COOPERATIVA CERAMICA D'IMOLA IS A MEMBER OF THE GREEN BUILDING COUNCIL ITALIA, WHICH OPERATES FOR THE DIFFUSION OF THE LEED ACCREDITATION SYSTEM. IN RELATION TO THE CHARACTERISTICS AND PRODUCTION PROCESS IN WHICH THEY ARE MANUFACTURED, TILES CAN CONTRIBUTE TO OBTAINING L.E.E.D (LEADERSHIP IN ENERGY AND ENVIRONMENTAL DESIGN) CREDITS. LEED IS AN ENERGY-ENVIRONMENTAL ACCREDITATION SYSTEM FOR BUILDINGS AND IS CHARACTERISED BY A POINTS SYSTEM ATTRIBUTED ACCORDING TO THE VERIFIED CONFORMITY OF SEVERAL PRE-ESTABLISHED "CREDITS". THIS CONTRIBUTION IS EVALUATED OVER THE TOTAL OF MATERIALS USED IN THE BUILDING.





IMOLACERAMICA.IT

wa
ve

A brand of
Cooperativa Ceramica d'Imola S.c.

Via V. Veneto, 13
40026 Imola (BO) Italia
Tel. +39 0542 601601
Fax +39 0542 31749
