

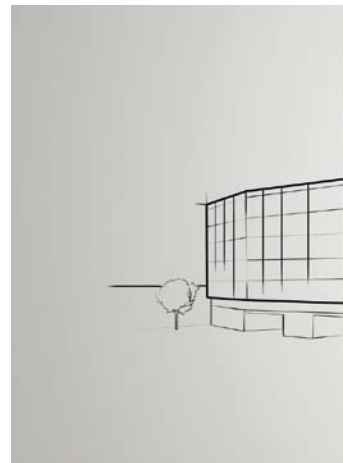
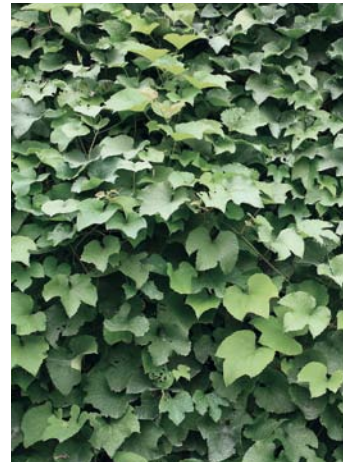
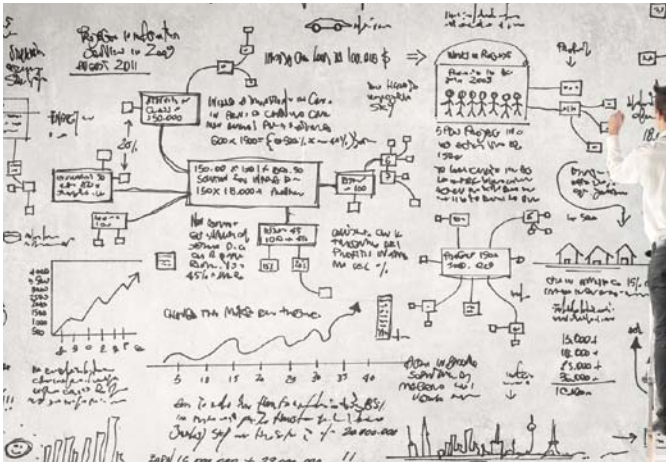
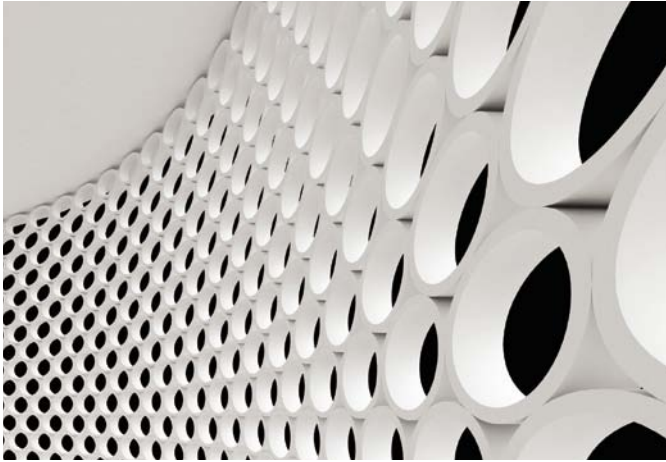
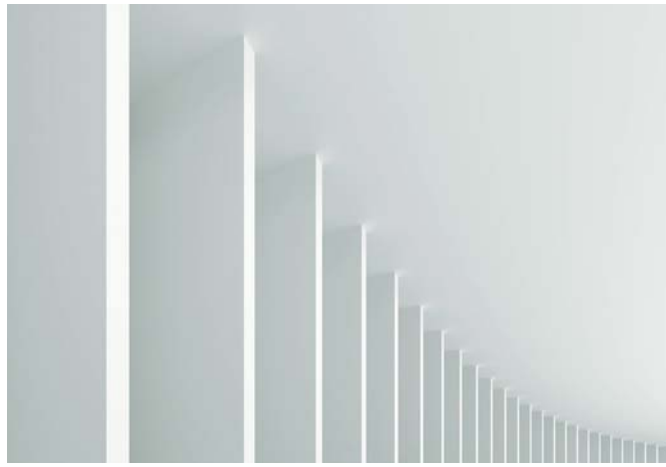


bee Italian dal 1874

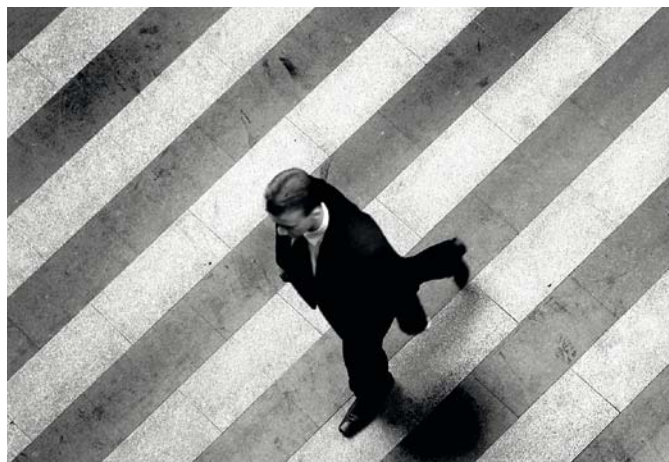


arkimcollection

NEWTON







## DESTINAZIONI D'USO

suggested applications  
destination  
anwendungsbereich  
lugar de empleo  
Предназначение  
Krajnja namjena  
用途



## ABITAZIONE

dometisc purpose  
habitation  
wohnbereich  
habitación  
жилое помещение  
stanovanje  
住宅



## COMMERCIALE LEGGERO

tiles for light commercial traffic area  
passage léger  
gewerblichen bereich  
pequeña superficie comercial  
торговое помещение с легкой нагрузкой  
male trgovine  
低流量商业



## COMMERCIALE PESANTE

tiles for heavy traffic area  
passage intense  
gewerblichen bereich mit hoher beanspruchung  
grande superficie comercial  
торговое помещение с высокой нагрузкой  
trgovine s velikim prometom  
高流量商业

## INDICAZIONI D'USO

indications for use  
instructions d'utilisation  
anwendungsbereich  
indicaciones de uso  
указания по использованию  
upute o korištenju  
使用说明



## PAVIMENTO

floor tiles  
sol  
boden  
piso  
пол  
podovi  
地板



## RIVESTIMENTO

wall tiles  
revêtement  
wand  
revestimiento  
облицовка  
zidovi  
墙面

## FINITURA SUPERFICIALE

surface finish  
finition superficielle  
oberflächen  
acabado superficial  
поверхностная отделка  
površinska dovršenja  
表面处理



## NATURALE

natural  
naturel  
natur  
matt  
природный  
prírodné  
自然式

## BORDO

edge  
bord  
rand  
borde  
кромка  
rub  
边缘



## RETTIFICATO MONOCALIBRO

monocaliber, rectified  
rectifié monocalibre  
rettifiziert monokaliber  
rectificado monocalibre  
ректифицированный монокалибр  
retificirane monokalibarske  
单尺寸研磨式

## STONALIZZAZIONE

shade variation  
variation de nuances schattierung  
destonalización  
разброс цветового тона  
gradacija  
石质化



## V4

# GRES PORCELLANATO A TUTTO SPESSORE

Full body porcelain tiles  
Grès cérame pleine masse  
Durchgefärbtes Feinsteinzeug  
Gres Porcelánico a toda masa  
Керамогранит полнотелый  
Porculansko-kamene pločice  
各种厚度的仿石瓷砖

**MADE IN ITALY**  
PRODOTTO ESCLUSIVAMENTE IN ITALIA



**arkim**collection

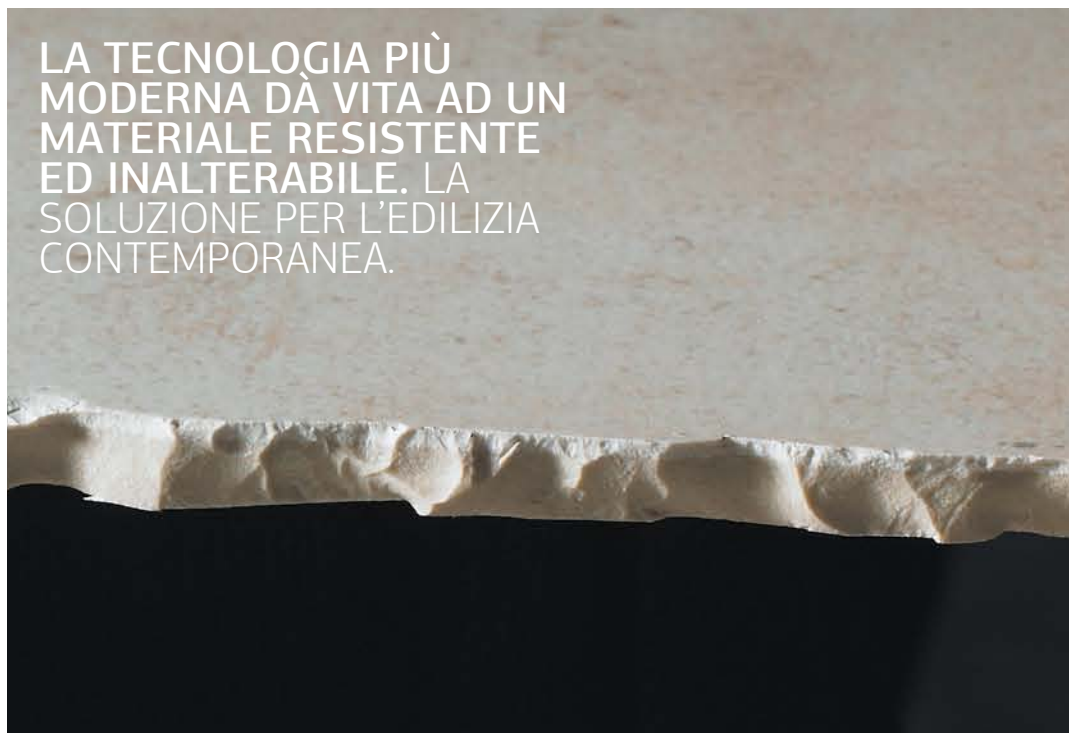
---

**NEWTON**

## GRES PORCELLANATO A TUTTO SPESSORE

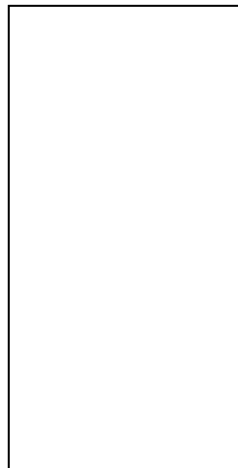
Full body porcelain tiles  
Grès cérame pleine masse  
Durchgefärbtes Feinsteinzeug  
Gres Porcellánico a toda masa  
Керамогранит полнотелый  
Porculansko-kamene pločice  
各种厚度的仿石瓷砖

LA TECNOLOGIA PIÙ  
MODERNA DÀ VITA AD UN  
MATERIALE RESISTENTE  
ED INALTERABILE. LA  
SOLUZIONE PER L'EDILIZIA  
CONTEMPORANEA.

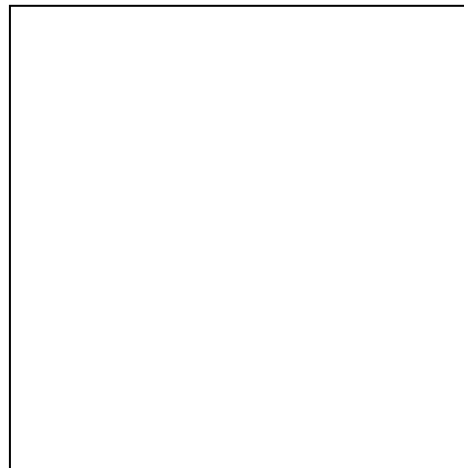


## FORMATI

sizes  
formats  
formate  
formatos  
Форматы  
formati  
版型



**30x60**  
12"x24"



**60x60**  
24"x24"

State-of-the-art technology gives life to a durable and inalterable material. Solutions for contemporary house building.

La technologie la plus moderne donne naissance à un matériel résistant et inaltérable. La solution pour la construction contemporaine.

Modernste Technologie verleiht einem widerstandsfähigen und beständigen Material Leben. Die Lösung für den zeitgemäßen Bau.

La tecnología más moderna crea un material resistente e inalterable. La solución para la construcción contemporánea.

Самая современная технология порождает прочный и неизменный материал. Решение для современного строительства.

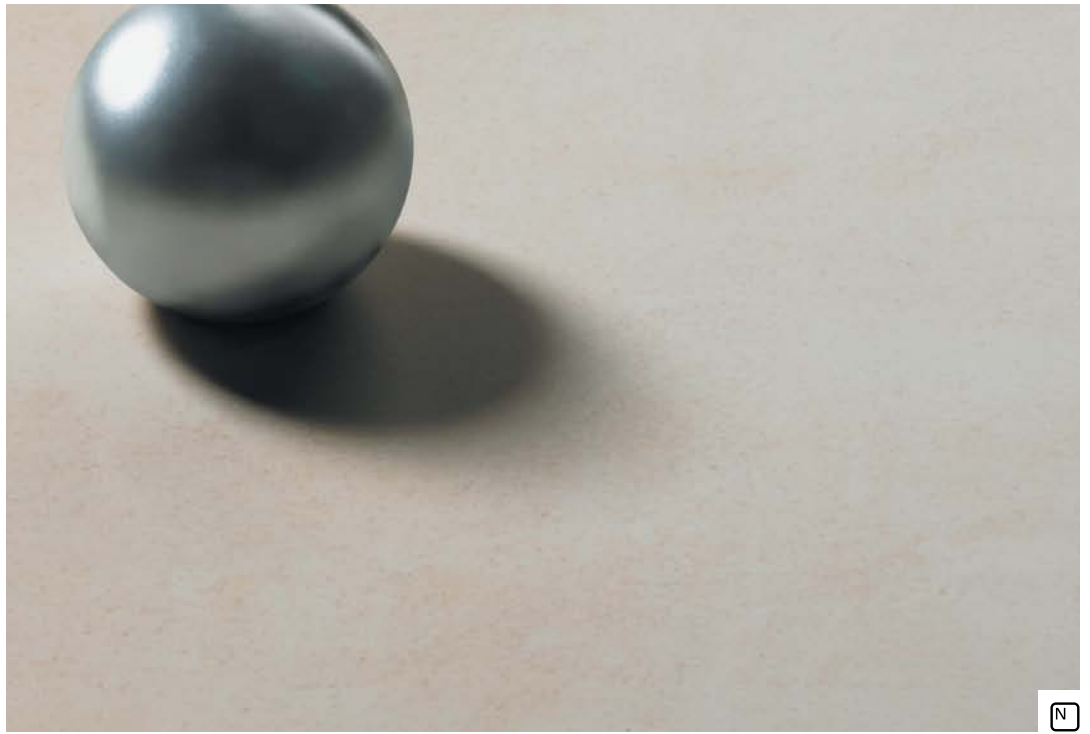
Iz najnovije tehnologije niče materijal, otporan i neizmjenjiv. Rješenje za modernu građevinsku industriju.

最现代的技术，带来坚固耐用、不会变性的材料。当代建筑解决方案。



## FINITURA SUPERFICIALE

surface finish  
finition superficielle  
oberflächen  
acabado superficial  
поверхностная отделка  
površinska dovršenja  
表面处理



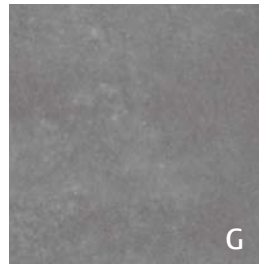
---

## COLORI

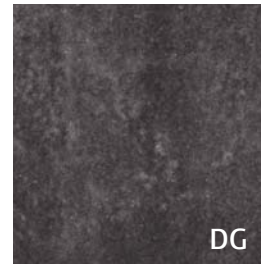
colours  
coloris  
Farben  
colori  
цвета  
boje  
顏色



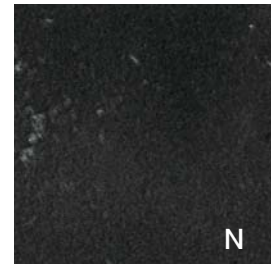
F



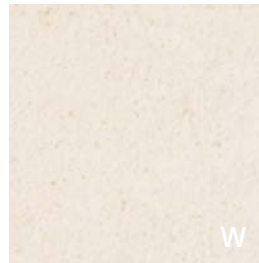
G



DG



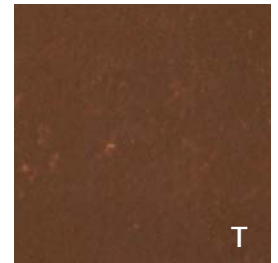
N



W



B



T

---

# NEWTON

arkimcollection







# NEWTON

---

MK.NEWTON 1

---

NEWTON 36N

---

NEWTON 60G

---



# NEWTON

---

MK.NEWTON 1

---

NEWTON 36N

---

NEWTON 60G

---







# NEWTON

---

MK.NEWTON 1

---

NEWTON 36N

---

NEWTON 60G

---





NEWTON

---

NEWTON 60DG

---













NEWTON

---

NEWTON 60DG

---





NEWTON

---

NEWTON 60DG

---











NEWTON

---

MK.NEWTON 24T

---

NEWTON 36T

---

NEWTON 60T

---





**PAVIMENTI  
E RIVESTIMENTI**

Floor tiles and Wall tiles  
Sol et Revêtement  
Bodenfliese und Wandfliese  
Pavimento y Revestimiento  
Напольная и облицовочная плитка  
Podovi i zidovi  
地面与墙面

**Newton F**



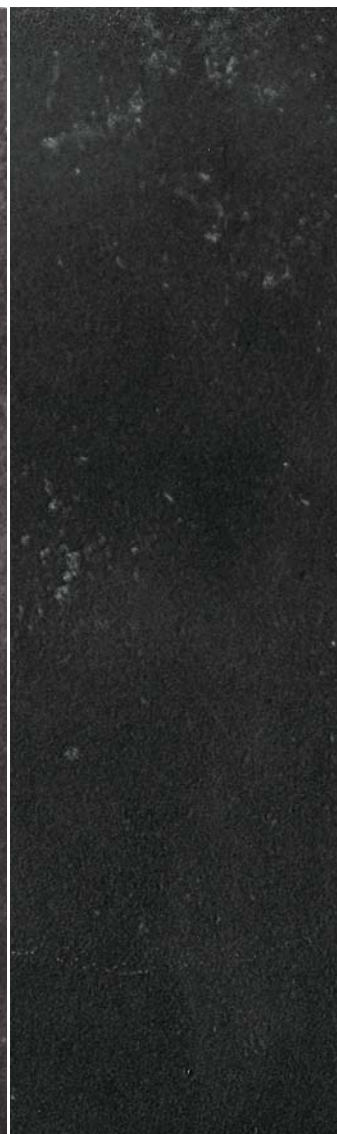
**Newton G**



**Newton DG**



**Newton N**



**30x60 12"x24"**

NEWTON 36F      € 9,5 - R9     

**60x60 24"x24"**

NEWTON 60F      € 10,5 - R9     

**30x60 12"x24"**

NEWTON 36G      € 9,5 - R9     

**60x60 24"x24"**

NEWTON 60G      € 10,5 - R9     

**30x60 12"x24"**

NEWTON 36DG      € 9,5 - R9     

**60x60 24"x24"**

NEWTON 60DG      € 10,5 - R9     

**30x60 12"x24"**

NEWTON 36N      € 9,5 - R9     

**60x60 24"x24"**

NEWTON 60N      € 10,5 - R9

Newton W



Newton B



Newton T




**30x60** 12"x24"

NEWTON 36W    € 9,5 - R9    

**60x60** 24"x24"

NEWTON 60W    € 10,5 - R9    

**30x60** 12"x24"

NEWTON 36B    € 9,5 - R9    

**60x60** 24"x24"

NEWTON 60B    € 10,5 - R9    

**30x60** 12"x24"

NEWTON 36T    € 9,5 - R9    

**60x60** 24"x24"

NEWTON 60T    € 10,5 - R9    



## DECORI

Decorations  
Décors  
Muster  
Decoraciones  
Декоры  
Dekoracije  
装饰



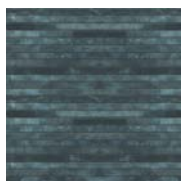
MK.NEWTON 24W  
30x30 - 12"x12"  
A+B



MK.NEWTON 24B  
30x30 - 12"x12"  
A+B



MK.NEWTON 24T  
30x30 - 12"x12"  
A+B



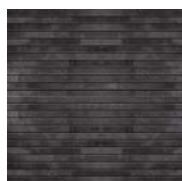
MK.NEWTON 24F  
30x30 - 12"x12"  
A+B



MK.NEWTON 24G  
30x30 - 12"x12"  
A+B



MK.NEWTON 24DG  
30x30 - 12"x12"  
A+B



MK.NEWTON 24N  
30x30 - 12"x12"  
A+B



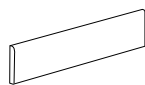
MK.NEWTON 1  
30x30 - 12"x12"  
A+B

L.DAGA 8  
0,8x60 - 0.3"x24"

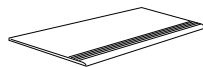
## PEZZI SPECIALI

Trims  
Pièces spéciales  
Sonderstücke  
Piezas especiales  
Специальные элементы  
Naročiti dijelovi  
特制件

Formato  
Size



9,5x60  
3.7"x24"



30x60  
12"x24"

Formato Size	9,5x60 3.7"x24"	30x60 12"x24"
	NEWT.BT 60F	NEWTON S60F
	NEWT.BT 60G	NEWTON S60G
	NEWT.BT 60DG	NEWTON S60DG
	NEWT.BT 60N	NEWTON S60N
	NEWT.BT 60W	NEWTON S60W
	NEWT.BT 60B	NEWTON S60B
	NEWT.BT 60T	NEWTON S60T







# ECO

Nature and technology combine to give birth to a new concept in ceramic tiles which places the relationship between man and the environment at the centre; an inseparable combination for the conscious achievement of eco-efficient corporate principles as well as those of environmental eco-compatibility, sealed with important recognitions.

La nature et la technologie se fondent pour donner naissance à un nouveau concept de céramique qui met au centre le rapport entre l'homme et l'environnement; un binôme indissociable pour que les principes d'éco-efficience de l'entreprise et d'éco-compatibilité environnementale une fois acquis soient reconnus par d'importants labels.

Natur und Technik verbinden sich, um ein neues Konzept der Keramik zu schaffen, in dessen Mitte die Beziehung zwischen Mensch und Umwelt steht; eine untrennbare Zweisamkeit für die bewusste Durchführung der Prinzipien der ökologischen Effizienz auf Firmenebene und der Umweltverträglichkeit, die durch wichtige Anerkennungen besiegelt sind.

La natura e la tecnologia si fondono per dar vita a un nuovo concetto di ceramica che mette al centro il rapporto tra l'uomo e l'ambiente; un binomio inscindibile per il conseguimento consapevole dei principi di eco-efficienza aziendale ed eco-compatibilità ambientale sigillata da importanti riconoscimenti.

La naturaleza y la tecnología se funden para dar vida a un nuevo concepto de cerámica que subraya la relación entre el hombre y el ambiente; un binomio inseparable para alcanzar los principios de eco-eficiencia empresarial y eco-compatibilidad ambiental sellado por importantes reconocimientos.

Природа и технология слились воедино для воплощения новой концепции в керамике, ставящей в центр отношение между человеком и окружающей средой; неразрывный симбиоз для сознательного достижения принципов эффективного природосбережения и экологической совместимости, скрепленных значительными признаниями.

Priroda i tehnologija se spajaju u rađanju novog koncepta keramike što se usredotočuje na odnos čovjeka i okoliša; nerazdvojna kombinacija za svjesno ostvarivanje načela ekološke učinkovitosti poduzeća i ekološke kompatibilnosti, potvrđena značajnim priznanjima.

自然与技术结合，带来全新的陶瓷理念，以人与自然的的关系为中心，落实企业生态效率和环境兼容性原则，获得多项重要认证。











COOPERATIVA  
CERAMICA  
D'IMOLA

**COOPERATIVA  
CERAMICA  
D'IMOLA**

---

Via V. Veneto, 13  
40026 Imola BO - Italia  
Tel.+ 39 0542 601601  
Fax+ 39 0542 31749  
ccimola.it

---

[imolaceramica.it](http://imolaceramica.it)  
[info@imolaceramica.it](mailto:info@imolaceramica.it)

arkimcollection